

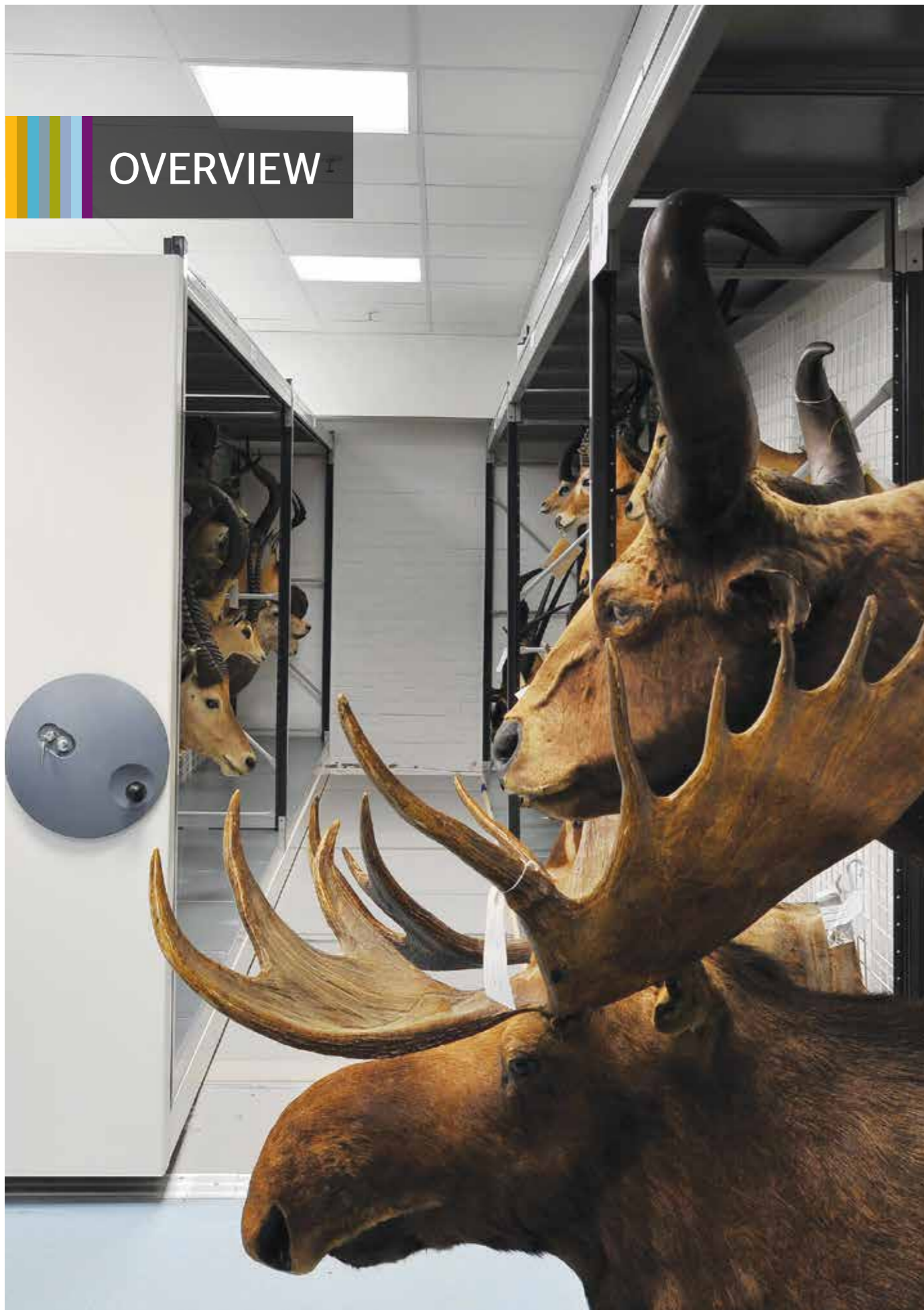


R A C K L I N E

MAKING SPACE WORK FOR YOU



OVERVIEW



When it comes to innovative storage solutions, Rackline have a whole host of options for you. With almost 30 years' experience in designing and manufacturing steel storage, we are one of the UK's leading shelving and filing solutions providers. Our headquarters, manufacturing and showroom facilities are based in Newcastle under Lyme, Staffordshire, with a combined workforce of over 70 people.

We have products to suit any business environment; our array of shelving solutions includes high-density mobile shelving, static shelving, central office shelving and cabinets. Whatever your requirements, rest assured we can design and manufacture a solution that meets your needs.

Rackline have built up long-lasting relationships with a diverse range of clients, from small businesses to blue chip companies and public sector organisations. All our systems are manufactured at our Staffordshire headquarters and provided to an ever-growing list of customers throughout the UK and worldwide.

Rackline offer a complete design service, where we carry out a full ergonomic storage and file audit and provide detailed layout drawings to establish the optimum working solution for the client's requirements.

Our suite of products is tested to British Standards BS EN 14073-2:2004 and are ISO 9001 quality approved.



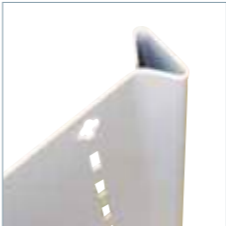


STATIC SHELVING



PROFILE

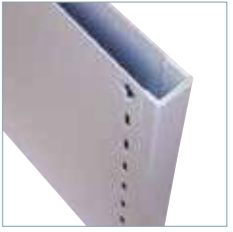
Profile shelving consists of a single-skin panel with a double-form rear section; it is a modular closed-wall steel shelving system where the intermediate uprights support the shelves in the adjoining bays. This ensures there are no sharp edges to the uprights and no possibility of stock migrating from bay to bay or becoming trapped behind upright posts.



PROFORM

Proform steel shelving consists of a double-skin panel with two sections of uprights that are spot-welded together to produce a 'box' section upright. This system provides all-round protection to the shelf's contents; this is ideal where clear access is required.

With no protrusions, edges or raised seams, items such as precious manuscripts and rare books are well protected.

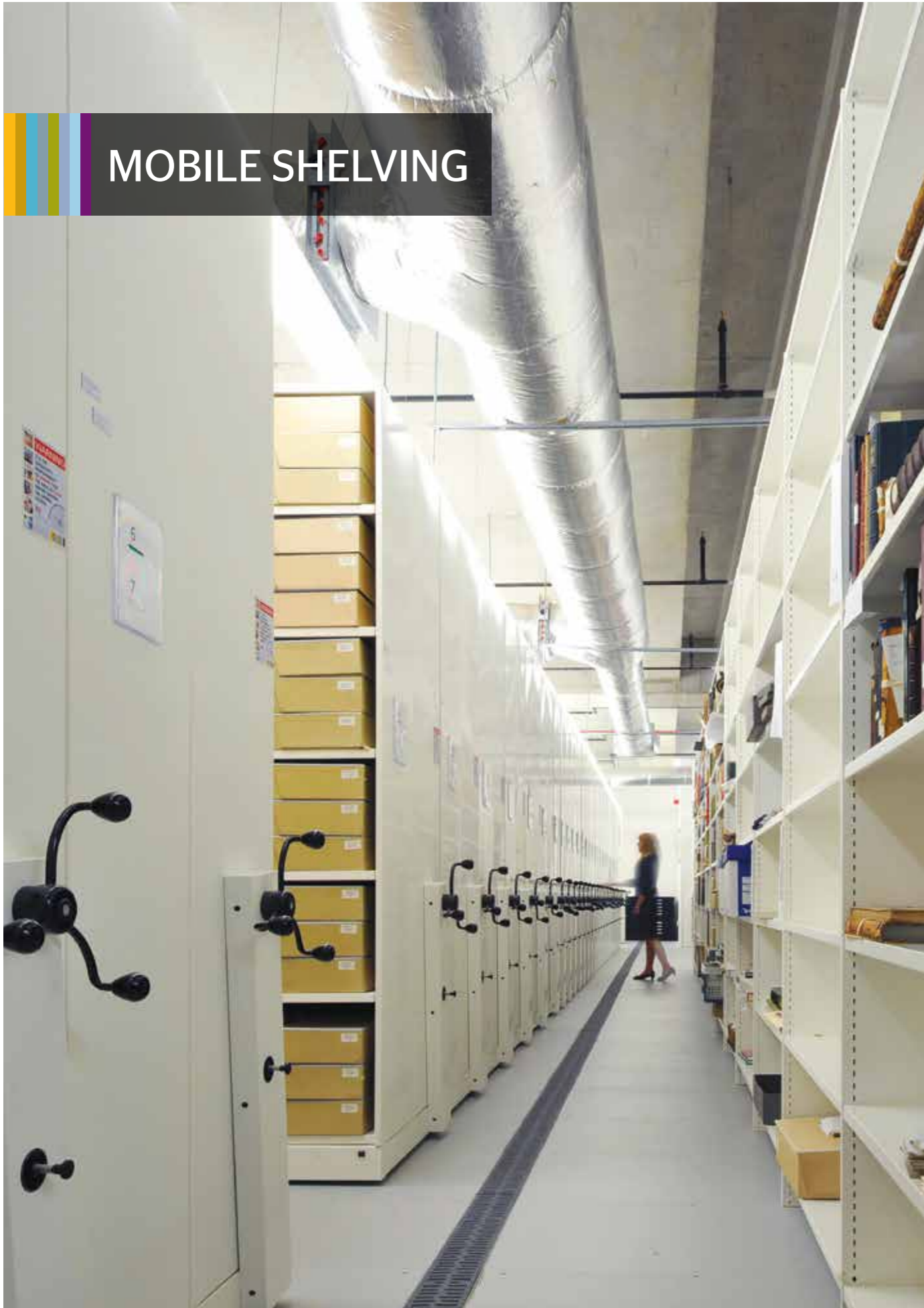


PROSPAN

An ideal archive storage solution, Prospan shelving is designed to extend beyond the sizes and capabilities of our Profile and Proform shelving, yet retaining the elegant style that can sometimes be lost with traditional longspan shelving.

The Prospan system can be specified in lengths between 1200mm and 1600mm wide and up to 4500mm in height with a capacity spread load per shelf of 125kg.





MOBILE SHELVING



MONOTRAK

INCREASE YOUR STORAGE SPACE BY 70%

Monotrak is a unique high density mobile shelving system, operating on a single guide track laid directly onto the existing floor. The advantage of this system being surface mounted is that it causes little residual damage to the floor and can be easily resited, if necessary.

A slim carriage profile and outstanding design enables loads of up to 2500kg and lengths of up to 5 metres long, which can be moved with ease.

It is ideal for the office environment and any of our static shelving ranges can be used within the Monotrak system.



MULTITRAK

Multitrak operates on the same principle of high-density storage as Monotrak, but employs multiple torque tubes and wheels to accommodate longer bases and greater loads.

Mobile carriages can be up to 12 metres long and loads can be up to 15 tonnes per carriage, which can be moved with ease.

The Multitrak system is perfect for larger office or archive/industrial applications or where the floor is uneven; you can also use our Profile, Proform and Prospan shelving in the Multitrak system.





POWERED SHELVING

POWERTRAK

HIGH TECHNOLOGY WITH SIMPLE CONTROLS

The Powertrak system can be installed with either of our Monotrak or Multitrak mobile shelving systems. It is suitable for the office and archive/light industrial environments.

Simple to use yet featuring sophisticated programmable logic controls, its numerous options include: timed access control, automatic lighting, PIN access and auto close.



QUANTUM

A STATE-OF-THE-ART ELECTRONIC DESIGN WITH A TREND CONSCIOUS STYLE

Quantum is Rackline's new entry-level powered mobile shelving system. Combining sleek designer looks with cutting-edge electronic design, it is also highly cost-effective.

It's Simple and safe to use, press and hold the button to move all the carriages at once, let go and the movement will stop.



ROTARY STORAGE SHELVING



PIROUETTE

FAST-ACCESS ROTARY STORAGE SYSTEM

Pirouette is a high-density and fast-retrieval rotary storage system with double-sided shelving mounted onto a heavy-duty rotary base.

The Pirouette is more efficient than conventional filing cabinets. For example, four Pirouette units will hold 48 metres of filing in less than four square metres of floor space which is equivalent to 22 four-drawer filing cabinets in 12.4 square metres of floor space - saving 8.4 square metres of space.



SPIN

The Spin is a unique low-level rotary unit from Rackline. It's a double-sided unit designed to store three levels of filing on each side, storing 3.48 linear metres of storage capacity within just over half a metre of floor capacity.

The Spin can be used to replace desk-side storage, including pedestals, provide partitioning in the office or be used as a more conventional rotary unit around the exterior of the room.



CENTRAL OFFICE MOBILE SHELVING



FILESTATION

MAXIMISE EFFICIENCY WITH OUR UNIQUE LOW LEVEL HIGH DENSITY STORAGE SOLUTIONS

Filestation is the first high-density product specifically designed for the working office and typically saves 33% more space compared to conventional office storage systems.

The patented 'ThruTrak' design means that Filestation can not only sit directly onto any floor surface without the need for an infill floor, but can also be used as a stand-alone system allowing complete walk-through of the product without being a trip hazard.

Filestation cuts retrieval time of files by 40% compared to traditional solutions used in the central office.



LOWTRAK

LowTrak is designed for the centre of the office, using a row of static units fronted by one less in number of sliding units.

The back row is accessed by sliding the front units.

LowTrak's flexibility means you can reuse your existing shelving or cupboards and mount them onto the LowTrak base.

The unique track allows the system to be installed onto a carpet or vinyl floor without the need for a base or infill floor.



LIBRARY SHELVING



PRO-LIBERO

Rackline have developed a new range of static library shelving to suit the needs of the modern library space.

Pro-Libero is a double-skin upright that conceals all fixings which support the structure of the system. The system is also designed as a 'braceless system', so back-to-back bays have no bracing or solid back for support; instead of this a hidden framework adds the required structure to the system.

The overall look of the system is clean and flush, as well as offers maximum storage options and through-bay storage capabilities.

This system includes options such as glass end panels, book dividers, back stops and many more accessories.



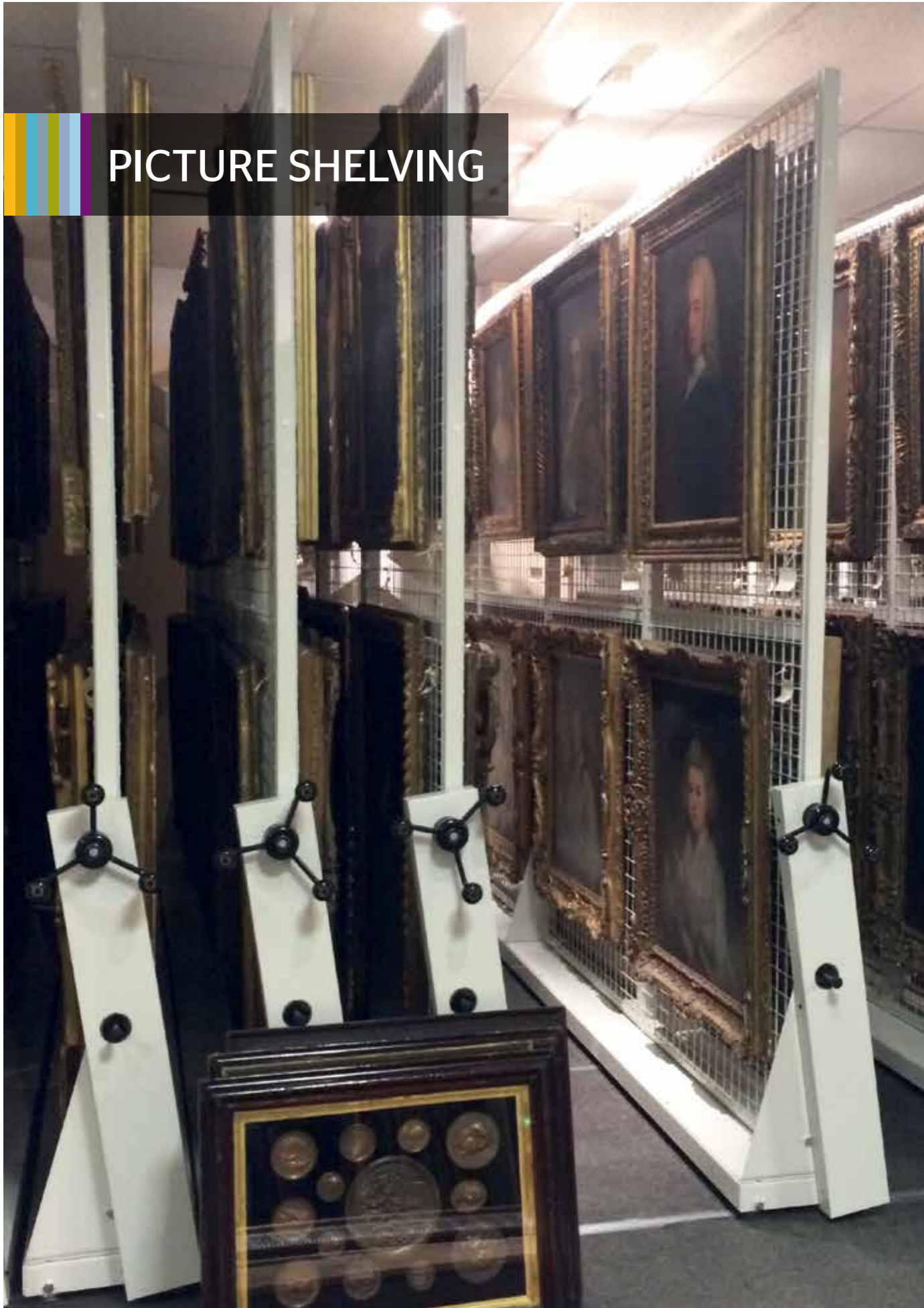
FLO-LIBERO

As an addition to the Pro-Libero range, Rackline have developed the Flo-Libero system.

This system offers the same features as the Pro-Libero, however, its main difference is that the shelving system is mounted onto a movable base with castor wheels. This enables back-to-back bays to be re-positioned within the library floor space as layouts and collection themes change, providing full flexibility to the shelving within the working environment.

In addition to the above, our Proform shelving range also complements the Pro-Libero and Flo-Libero library shelving.





PICTURE SHELVING



LATERAL MOBILE RACKING

Mobile Picture Racking incorporates double-sided picture mesh frames, fitted to mobile carriages to maximise space capacity when storing framed paintings.

Working in an identical manner to conventional mobile shelving, Mobile Picture Racking enables users to maximise floor space areas with the use of a single-access aisle.

Unlike conventional pull-out picture racking, only standard size front gangways are required for access, and no frame or column structures are required for stability. It can be fitted to our Monotrak or Multitrak mobile bases, depending on the weight loadings and size of the storage system, it also allows for the use of optional integral aisle lighting helping maintain energy-saving efficiencies of the archive area.



PULL- OUT

There are two standard types of Pull-out Picture Racking: top supported and bottom supported. Both are designed and manufactured to fit any storage space; and can be used to store hanging items such as rare paintings or even mounted animal heads

The Pull-out Picture Racks are constructed from fully welded steel sections and can be free standing or ceiling supported. The mesh frame is a heavy gauge wire mesh welded to both faces of the picture racking frame to give maximum square metre storage space to both sides.

As part of the Pull-out Picture Racking range, we also manufacture wire-mesh wall panels to provide additional storage capacity to wall faces or to turn 'dead spaces' into live space i.e. at the rear of conventional mobile racking systems.





PROFLEX



ACCESS CABINETS



CABINETS AND LOCKERS

SUPERB AESTHETICS WITH PRACTICAL PRICES

Rackline offer a system storage range of stylish office cabinets/ lockers designed to fit into any environment and complement our high-density storage range.

Proflex offers a high-quality design for the office environment but with an affordable price tag. The Proflex range uses the same aesthetic carcass and is available in either two or three pod lockers per level, providing six, eight, ten or fifteen lockers for personal storage, or the same unit can be used as a double-door cabinet. The interior is intelligently set out to cater for the modern workspace media storage.

All Proflex lockers are 500mm deep, come with a ten-year guarantee and are available in any RAL colour.

Options include coloured glass tops and drawers on the lower levels of the Proflex cabinets.



CABINETS

HIGH CAPACITY CABINETS WITH SUPERB AESTHETICS

Rackline offer a range of cabinets designed to cater for any environment and also complements our storage range.

The Rackline cabinets range includes side filers, tambour units with either vertical or side-opening doors and open-fronted or double-door units.

If there is a requirement for frequent moving of the cabinets, Rackline can fit the cabinets with a Fastrak base. This makes the cabinet permanently mobile and allows it to be wheeled through the office by your own staff.





PROSECURE CABINETS



FILES



PROSECURE CABINETS

KEEPING HIGH VALUE PRODUCTS SAFE AND SECURE

Rackline's Prosecure cabinets are robust steel filing cabinets with lockable steel doors designed for storing highly secure documents, equipment, stock or personal items in any environment whether it be hospitals, schools, offices or industrial warehouses.

The Prosecure cabinets have a variety of rated locks that can be incorporated to deliver the security you require.

The units can be supplied in two sizes: six levels at 2210mm high and three levels at 1180mm high. Cabinets are available in a variety of RAL colours.



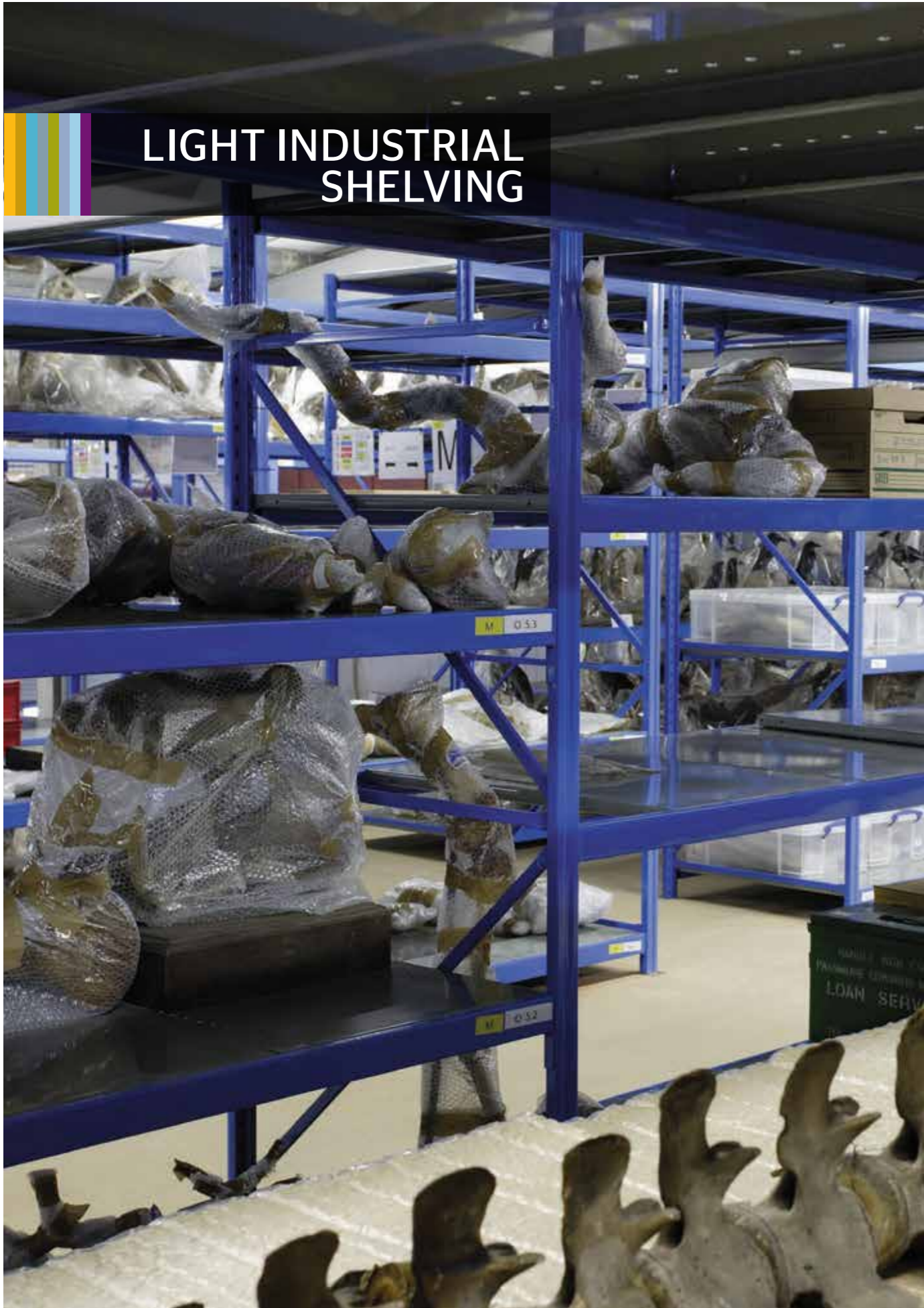
FILELINE

INNOVATIVE FILING SOLUTIONS AND PRODUCTS

Fileline is a specialist division of Rackline that offers a complete filing consultancy service whereby we analyse your existing filing and storage methods. Based on this information we produce an in-depth report detailing your current file status and provide recommendations to implement a space-saving and efficient filing and retrieval system tailored specifically to your company's requirements.

In addition to the above, we also provide a variety of bespoke files, file transfer, conversion and move management, database compilation, colour coded labelling and document tracking.





LIGHT INDUSTRIAL SHELVING

WIDESPAN

ADAPTABLE LONGSPAN SHELVING

Widespan is a longspan shelving system which offers the facility of either steel or chipboard shelves on spans up to 2.7 metres. Supported by either open or closed end frames.

With a wide range of beam profiles, easily adjustable shelf levels and a smooth front face, Widespan is both attractive and fully versatile, and suitable for use in archives, museums, industry, health and retail.

Typical products stored on Widespan includes hanging garments, large box storage and museum fossil collections.



SPEEDRAX

LOW-COST, ALL PURPOSE SHELVING

With a wide range of size options available, Speedrax is a low-cost option for all your storage needs. Shelves can be easily adjusted to accommodate changing requirements and offer unrestricted access from all sides.

Comprising steel posts and beams supporting chipboard shelves, Speedrax shelving systems are ideal for hand-loaded bulky items and can carry a maximum shelf load of 700kg. (Uniformly distributed load for a 1500mm wide load).

Typical products stored on Speedrax include archive boxes, small parts storage and garment hanging.





SPECIALIST STORAGE



For a free no obligation site survey,
layout drawings and quotation,
contact us today.

01782 770 144
WWW.RACKLINE.COM



Rackline Limited, Oaktree Lane, Talke, Newcastle-Under-Lyme,
Staffordshire ST7 1RX E: now@rackline.co.uk

