

## COLCHESTER AND IPSWICH MUSEUM SERVICE - WHERE HISTORY COMES ALIVE...

Colchester and Ipswich Museums Service was formed in 2007 to create a stronger, more dynamic service for the two towns.

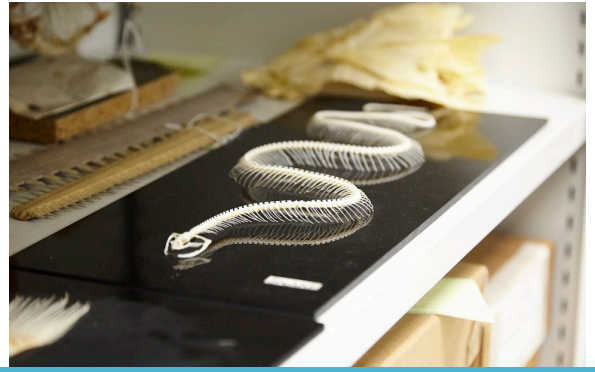
Colchester's Museum service consists of Colchester Castle, Hollytrees Museum and the Natural History Museum. These iconic buildings and Colchester's diverse history combine to make Colchester an award winning tourism destination.

See our fabulous results >



**Brief:** The Museum Service was relocating from the Museum Resource Centre which contains offices and stored collections, to new accommodation at the museums service main off-site store. The project included storage for natural history, art, archives and metalwork over 5 separate rooms.

The brief was to include mobile storage to maximise capacity and include pull out picture racking to one of the rooms. All the shelving was to be installed within a dedicated two week period. Following a very detailed tender process Rackline was awarded the project.



*“Rackline were successful in winning a highly competitive tender, we worked together to provide a solution that would fully accommodate the variety of artefacts whilst maximising the space we had available.”* Tom Hodgson, Colchester Museums Manager

**Solution:** Rackline worked with the client and designed a range of products specifically for the areas and items to be stored:

In 4 areas Rackline mounted the storage product onto Monotrak mobile & static bases to maximise the areas. The Monotrak system worked perfectly as it was installed directly onto the existing floor without the need for an infill floor or ramp and without trip hazards in the aisles.

**Main Natural History Store 1 and 2** - in these areas Rackline designed an adjustable dust proof storage cabinet with either single or double doors. The cabinet included rails to store new drawers or the existing wooden drawers - allowing the client the opportunity to replace drawers if necessary and also to pitch the shelves every 25mm to accommodate their varying collection. The area was maximised by mounting the cabinets onto Monotrak mobile & static bases.

**Art** - the artwork solution was the perfect way of installing a pull-out picture racking solution with 2 sets of 15 frames either side of the room pulling into one central aisle.

In the archive area Rackline installed Prospan open framed adjustable shelving mounted onto Monotrak mobile bases. The system was designed to accommodate a range of boxes sizes storing archival collections. The Prospan is ideal in areas where PD5454 is specified as it allows for airflow around the objects.

**Metalwork** - this area needed to have flexible shelving to accommodate the varying sizes of items stored, Rackline installed fully adjustable Prospan shelving which had open posts to store the items and was mounted onto Monotrak mobile bases.

Rackline completed the installation within the time period required.

