

Crown
Commercial
Service
Supplier

Gyani Sundar Singh Sagar (1917-1996).
Sikh scholar and campaigner for Sikh rights.
Image courtesy of The University of Manchester.



CROWN COMMERCIAL SERVICE SUPPLIER
FRAMEWORK NUMBER RM3812



2-3	Overview
4-5	Static Shelving
6-7	Mobile Shelving
8-9	Powered Shelving
10-11	Low Level Storage
12-13	Light Industrial Racking
14-15	Pirouette Rotary Storage
16	Cabinets & Lockers
17	Sidetrak

APPROVED SUPPLIER 2008-2018

Crown
Commercial
Service
Supplier





RACKLINE THE HISTORY AND ROLE ON THE FRAMEWORK

Rackline have been a Crown Commercial Service framework supplier since 2008 and are pleased to be included in the new contract from 2017. Since 2008 we have been working with the public sector to assist them with their storage requirements.

Rackline are a leading manufacturer of high density mobile and static storage systems and offers a wide range of products designed to maximise storage capacity.

This brochure shows a selection of products available under the framework agreement.

CROWN COMMERCIAL SERVICE WHAT DOES IT MEAN?

“Crown Commercial Service is an executive agency of the Cabinet Office. The priority is to provide procurement savings for the UK public sector as a whole and specifically to deliver centralised procurement for central government departments”.

Rackline has been through a rigorous evaluated procedure to become a Crown Commercial Service supplier, the procedure undertaken ensures that customers do not need to undertake further competitive tendering.

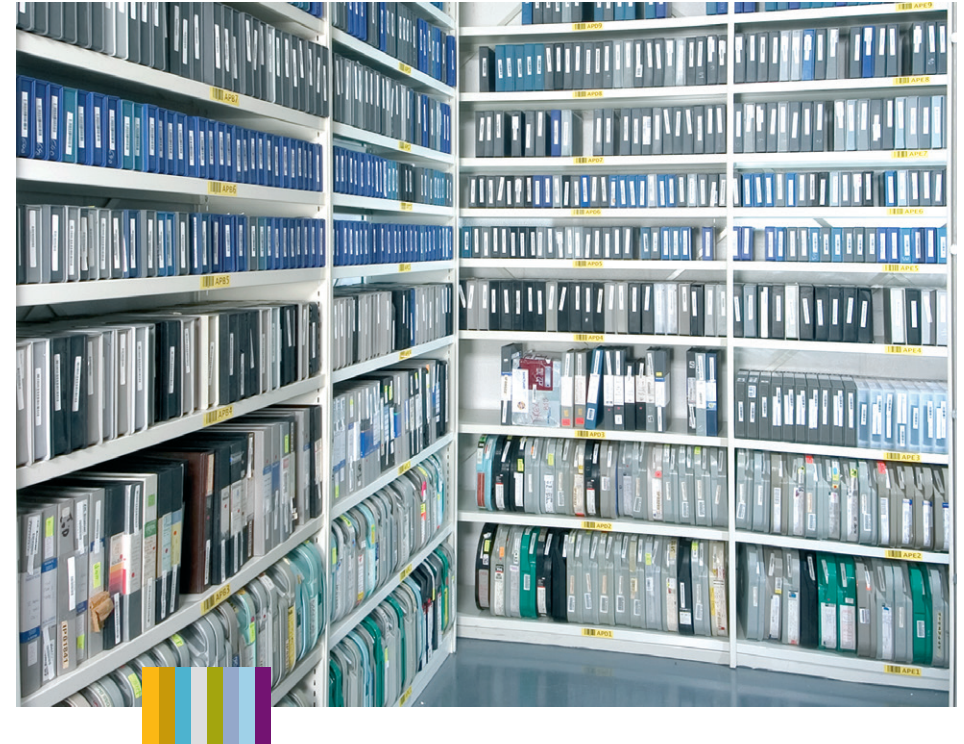
The company has been tested to ensure they are in line with government standards, for example ISO1901:2008 Quality Standards, ISO14001 Environment Standards, also the products have been tested to ensure they conform to storage furniture standard - BSEN14073-2:2004 BSEN14073-3:2004

The framework agreement has pre-tendered procurement arrangements and ongoing benchmarking to ensure that Rackline offers quality products at the most competitive prices.

Framework Agreement Reference: RM3812
Furniture and Associated Services - Lot 4 High Density Steel Storage

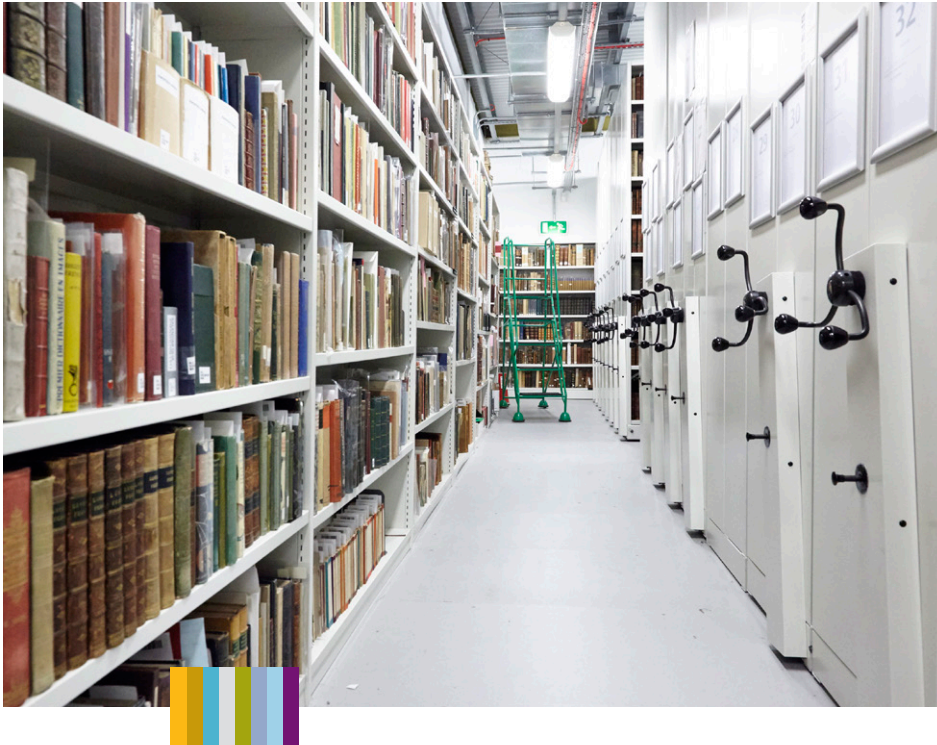


STATIC SHELVING



PROFILE A FLEXIBLE HIGH DENSITY FILING FACILITY

Profile shelving is designed as a modular closed wall construction where the intermediate uprights support the shelves in the adjoining bays. This ensures there are no sharp edges to the upright and no possibility of stock migrating from bay to bay or becoming trapped behind upright posts.



PROFORM CARES FOR YOUR PRODUCT ON THE SHELF

Proform shelving is designed with a double panel upright to provide total protection to the shelf's contents.

With no protrusions, edges or raised seams, even precious manuscripts and rare books are well cared for.



PROSPAN DESIGNED TO MAXIMISE CAPACITY IN ARCHIVE AND INDUSTRIAL APPLICATIONS

The ideal archive storage solution, Prospan shelving is designed to extend beyond the sizes and capabilities of Profile and Proform while retaining its elegant style.

The Prospan system can be specified in lengths between 1200mm and 1800mm wide and up to 4500mm in height with a capacity spread load per shelf of 125kgs.



MOBILE SHELVING



MONOTRAK DOUBLE YOUR STORAGE SPACE

Monotrak is a unique mobile system, operating on a single guide track laid directly onto the existing floor.

A slim carriage profile and outstanding design enables loads of up to 2500kgs and 5 metres to be moved with ease.

This system is ideal for the office environment.



MULTITRAK BUILT TO YOUR SPACE REQUIREMENTS

Multitrak operates on the same principle as Monotrak, but employs multiple torque tubes and wheels to accommodate longer bases and greater loads.

Mobile carriages up to 12 metres long and loads of up to 15 metres long per carriage can be moved with ease.

The Multitrak system is perfect for an office or archive/industrial application.



POWERED SHELVING



POWERTRAK HIGH TECHNOLOGY WITH SIMPLE CONTROL

A powered system can be applied to either of the mobile options. Simple to use yet featuring sophisticated programmable logic controls, Powertrak makes office storage as effortless as possible.

Numerous options include: timed access control, automatic lighting, PIN access and auto close.



QUANTUM STATE OF THE ART ELECTRONIC DESIGN WITH A TREND CONSCIOUS STYLE

Quantum is Rackline's new entry level powered mobile shelving system. Combining sleek designer looks with cutting edge electronic design, it is also highly cost effective.

It's simple and safe to use, too - press and hold the button to move all carriages at once; let go and the movement will stop.



LOW LEVEL



FILESTATION MAXIMISE EFFICIENCY WITH OUR UNIQUE LOW LEVEL STORAGE SOLUTION

Filestation is the first high density product specifically designed for the working office and typically saves 33% more space compared to conventional storage systems.

Filestation incorporates the Thrutrak system which provides access from either side, allowing the flexibility of a free standing Filestation or a traditional benching system.

By bringing active files back into the central office, productivity is dramatically increased. Filestation cuts retrieval time by 40% compared to traditional solutions.



LOWTRAK GREATER CAPACITY THAN CONVENTIONAL STORAGE

Lowtrak is designed for the centre of the office, using a row of static units fronted by one less in number of sliding units. The rear is accessed by sliding the front units.

Lowtrak's flexibility means you can reuse your existing shelving or cupboards and mount them onto the Lowtrak base.

The unique track allows the system to be installed onto a carpet or vinyl floor without the need for a base or infill floor.



LIGHT INDUSTRIAL RACKING

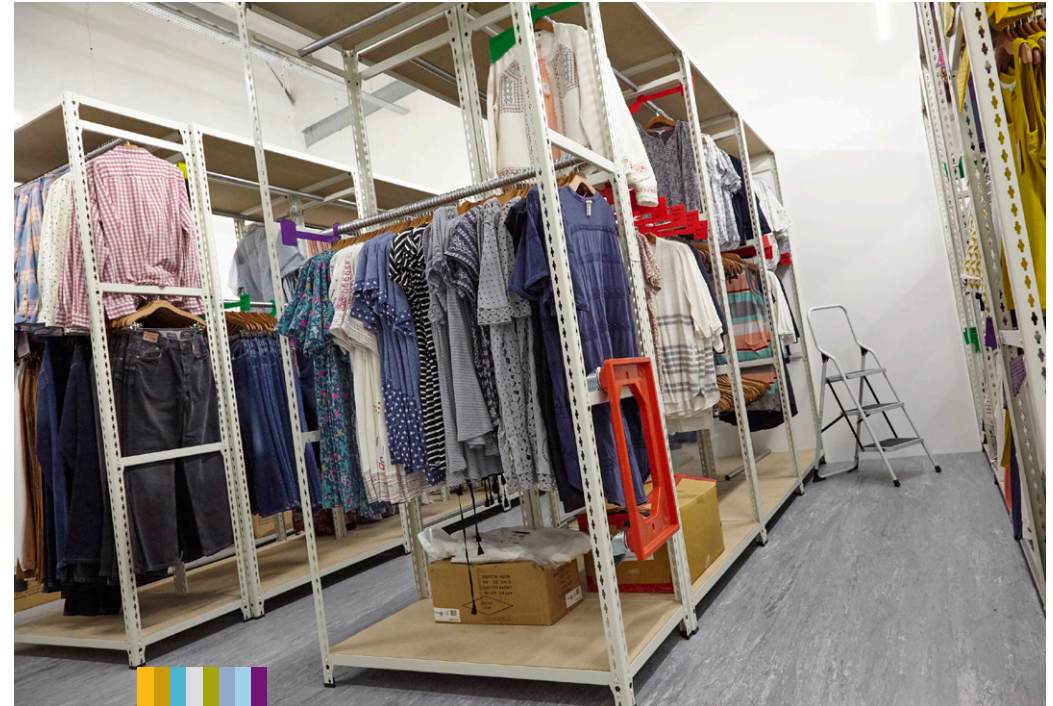


WIDESPAN **ADAPTABLE LONGSPAN SHELVING**

Widespan is a longspan shelving system offering the facility of either steel or chipboard shelves on spans up to 2.7 metres. Supported by either open or closed end frames, it easily adapts to two tier or high bay installations.

High bay and multi tier options are invaluable alternatives to the single tier static and mobile heavy duty shelving arrangements. Featuring a range of beam profiles, easily adjusted shelf levels and a smooth front face, Widespan is both attractive and flexible.

Widespan frames can also be used with tubular beams as garment hanging racks. Cost effective, this solution has adjustable beam levels, allowing hanging beams to be repositioned to accommodate the garments.



SPEEDRAX **LOW COST, ALL PURPOSE SHELVING**

With a wide range of size options available, Speedrax is a low cost option for all your storage needs. Shelves can be easily adjusted to accommodate changing requirements and offer unrestricted access from all sides.

Comprising steel posts and beams supporting chipboard shelves, Speedrax shelving systems are ideal for hand loaded, bulky items and can carry a maximum shelf load of 700kg (uniformly distributed load for a 1500mm wide bay).

ROTARY STORAGE UNITS





PIROUETTE FAST ACCESS ROTARY STORAGE SYSTEM

Pirouette is a high density and fast retrieval rotary storage system with double sided cabinets mounted onto a heavy duty rotary base.

Pirouette is more efficient than conventional filing cabinets, for example four 2414mm high Pirouette units will hold 48m of filing in less than four square metres of floor space which is equivalent to 22 four-drawer filing cabinets in 12.4 square metres of floor space – saving 8.4 square metres of space.



SPIN PERSONAL STORAGE WITH DESKSIDE FILING

The Spin 2013 is the unique low level rotary unit from Rackline. Combining the personal storage and flexibility of the Spin 2012, it features additional storage capacity so that lever arch files can be stored on both sides.'

The Spin is a double sided unit designed to store three levels of filing on each side, storing 3.48 linear metres of storage capacity within just over half a metre of floor capacity.

The Spin unit is 1175mm high x 875mm wide x 755mm deep (shelf sizes 580mm x 300mm).The Spin is great news for open plan offices as it replace desk side storage, provide partitioning or be used as a more conventional rotary unit around the exterior of the rooms.



LOCKERS AND CABINETS

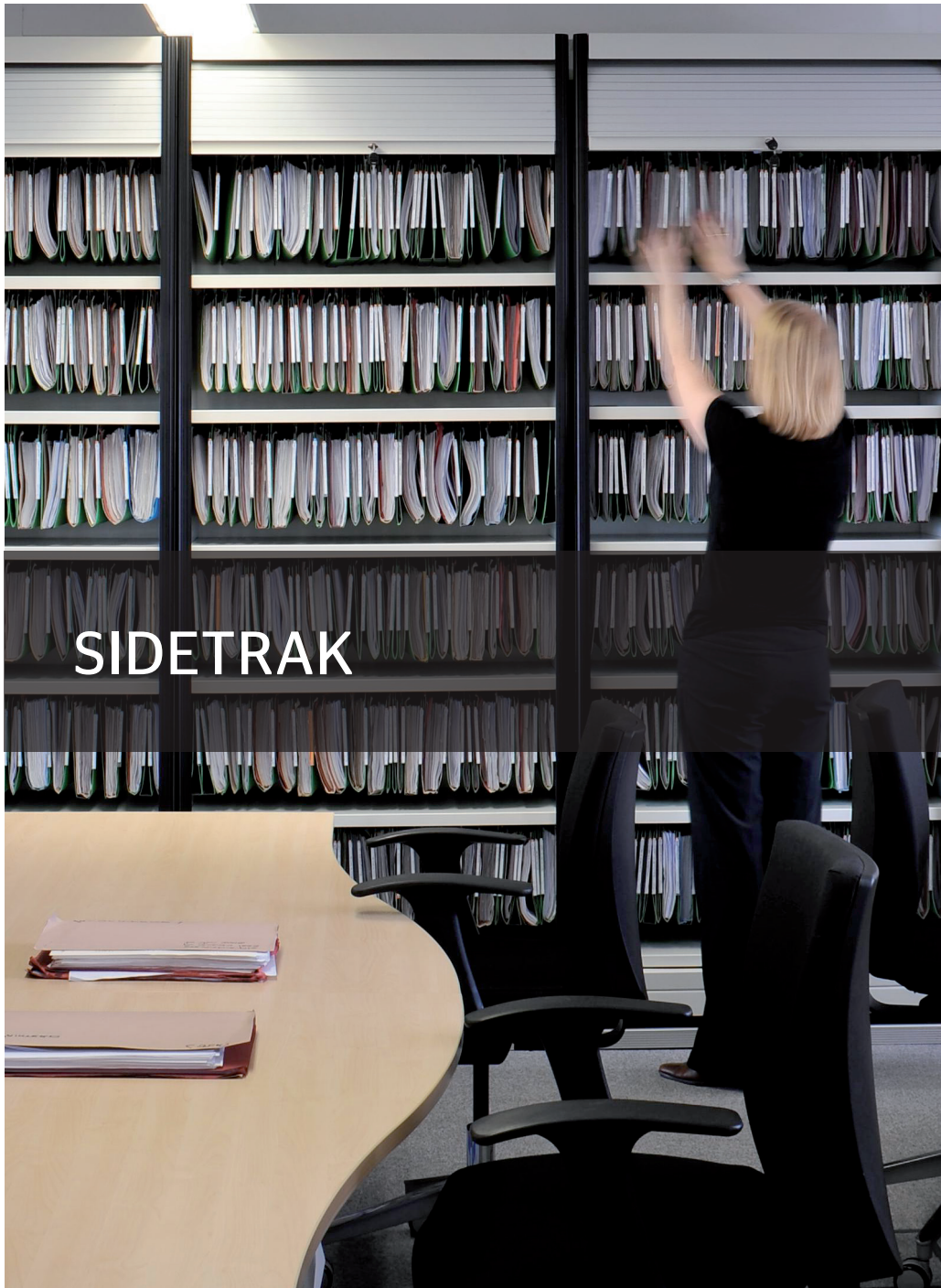


LOCKERS AND CABINETS SUPERB AESTHETIC WITH PRACTICAL PRICES

Rackline offer a range of cabinets and lockers designed to suite into any environment and complement our storage range.

Profine offer a high quality design for the office environment but with an affordable price tag. Two and three pod units are available providing six and nine lockers respectively.

The Rackline cabinets range includes side filers, tambour units with either vertical or side opening doors and open fronted or double door units.



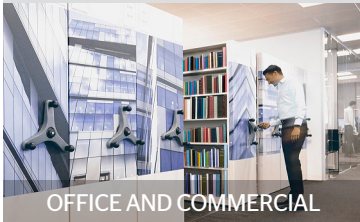
SIDETRAK COMBINES STATIC AND MOBILE STORAGE

When office space is limited but a high volume of storage is required, i.e. in corridors and alcoves, Sidetrak is the ideal solution.

The system features a row of fixed cabinets fronted by one less in number of sliding units. Access the rear rank by sliding the front cabinets, and add roller shutter doors to make the system secure.

In confined environments with corridor space, Sidetrak's ingenious design turns previously unused areas into storage options.

Making space work for you



Crown
Commercial
Service
Supplier



For more information call 01782 770 144

Rackline Limited, Oaktree Lane, Talke, Newcastle-Under-Lyme, Staffordshire ST7 1RX
e: now@rackline.co.uk www.rackline.com