


RACKLINE
STORAGE SYSTEMS

Museum Storage



With over 40 years experience in the design, manufacture and install of a huge range of storage solutions for museums and heritage, Rackline are the perfect partner to maximise your space.



RACKLINE

Our manufacturing facility operates from our main factory site in Staffordshire. The skilled teams boast hundreds of years of manufacturing skills between them, allowing for high volume production and highly flexible, high quality bespoke output.

The entire Rackline business adheres to both ISO9001 and ISO14001 standards, and has a focus on reducing its environmental impact. As a responsible manufacturer we take as many steps as possible to ensure that our manufacturing equipment and practices are as environmentally focused as possible.

ACCREDITATIONS AND MEMBERSHIPS



HOW TO FIND US



Rackline Head Office

Oak Tree Lane
Talke,
Talke Pits,
Stoke-on-Trent,
ST7 1RX

Tel: 01782 770 144

To find out more about any of these talk to your local sales representative.

RACKLINE SOLUTIONS FOR MUSEUMS

Rackline are the experts in museum storage, having provided solutions into some of the biggest names in the industry since 1984. Together with a range of standard storage products, Rackline's teams can also support you with the development of truly bespoke, tailored solutions to meet the needs of your collection and space.

Art Storage:

Rackline's Lateral, Pull-Out and Toast Rack systems are designed to keep your artworks/items safe, yet easily accessible. These solutions are in use by some of the biggest names, to protect their valuable inventory.



Mobile Storage Solutions:

A specialty of Rackline, our mobile systems enable the safe storage of even heavy and cumbersome items, maximising space by consolidating storage areas and ensuring efficient access to museum collections.



Static Shelving:

The Rackline range of static shelving systems is designed for a cross-section of uses, from safe storage of archival materials to efficient organisation of museum collections, ensuring that items are securely held and easily accessible.



Plan Chest Units:

Rackline plan chest units are designed to hold flat maps, artworks, and documents, ensuring they are easily accessible, but protected from external contaminants and damage.



Secure Cabinets:

Rackline lockable cabinets are designed for your most precious items, with secure locks and reinforced steel adaptations to ensure your museum artefacts are protected from theft, damage, and environmental factors.



Museum Cabinets:

Rackline's museum cabinets are strong steel cabinets designed with plain steel doors, or with inset glass panels. Choose the features that keep your inventory safe and in ideal conditions.



ART STORAGE

Rackline has been designing, manufacturing and delivering art storage racking and art storage solutions since 1984. This experience means that we have grown to be one of the most trusted manufacturers of these systems out there.

Our clients range from local, national and international museum groups, public sector galleries to private collections.



LATERAL MOBILE RACKING

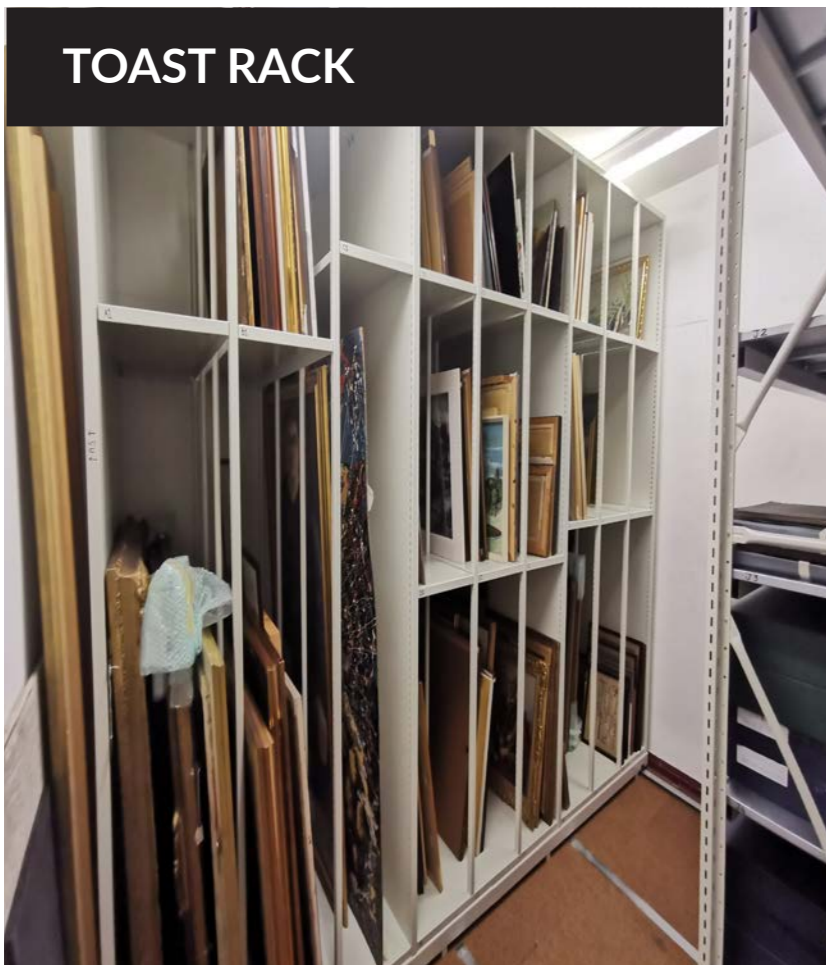
Rackline's Lateral Mobile Picture Racking (LMPR) is used within numerous museums and archives around the world. The system incorporates double-sided mesh frames fitted to mobile carriages.

LMPR works identically to, and utilises our mobile shelving bases, enabling you to maximise your floor space. Unlike pull-out racking solutions, only a standard front gangway is required for access, and no frame or column structures are required

The choice of mobile base required depends upon the weight loadings and size of the storage system.



TOAST RACK



The Rackline Toast Rack vertical storage solution is designed to safely store artworks in a high density, flexible manner.

Toast Rack units are highly configurable, featuring storage compartment heights (adjust the heights in 25mm increments) and widths to suit your individual needs and your desired capacity.

The internal pole dividers are far stronger than standard 'rod dividers' and are compatible with our shelving systems.

Toast Rack units can even be fixed to our mobile bases to maximise the capacity of your archive.

PULL OUT RACKING



Rackline's Pull-out Picture Racking comes in two varieties: top and bottom supported. Both are designed and built to fit any storage space, and can be used to store a variety of hanging items. We have seen everything from rare paintings to mounted animal heads hung from our systems.

Rackline's Pull-out Picture Racking is constructed from fully welded steel sections and can be free standing or ceiling supported. The mesh frame is constructed from heavy gauge wire welded to both faces of a steel frame to give maximum square metre storage space to both sides.

As part of the Pull-out Picture Racking range, we also manufacture wire-mesh wall panels to provide additional storage capacity to wall faces or to turn 'dead spaces' into live space i.e. at the rear of conventional mobile racking systems.

STATIC SHELVING

The Rackline range of static shelving is designed to be fitted in a set position and secured in place to provide permanence, structure and stability.

Static solutions are often chosen to form open storage environments such as: Libraries, Archives or Stock Rooms.

Rackline provides a number of system types, and options depending upon your individual need.



DOUBLE SKIN

Proform and Pro-Libero are our robust static shelving solutions featuring an incredibly strong 'box' section upright. This upright is manufactured as a double-skin panel with two sections spot-welded together.

These systems are cleverly designed to provide clear access, while protecting the shelf contents, with no protrusions, edges or raised seams.

Double Skin system are used in locations where delicate items such as precious manuscripts and rare books need protection.



SINGLE SKIN



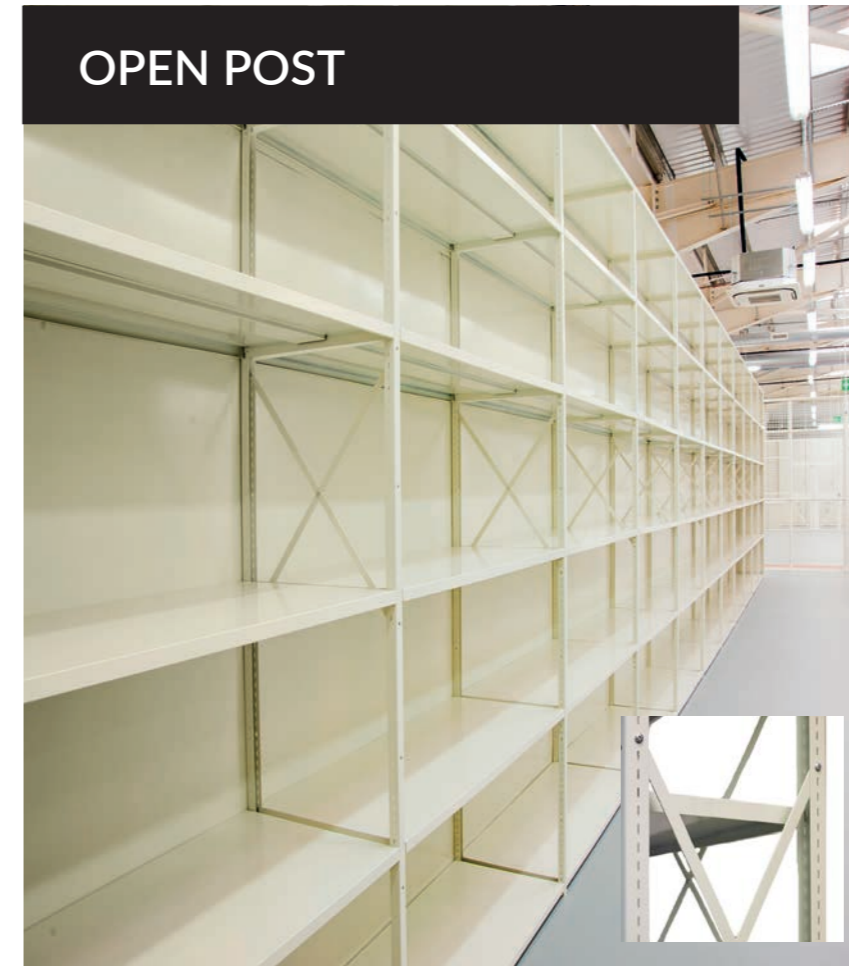
The Rackline Profile single-skin shelving system consists of a panel with a double-form rear section.

One of our range of closed-wall steel shelving systems, the intermediate uprights are designed to support the shelving in adjoining bays.

Clever design and careful manufacturing removes sharp edges on the uprights and tight manufacturing tolerances remove the potential for stock migrating from bay to bay or becoming trapped behind upright posts.

Profile single skin shelving can be powder coated to your environment. The finish is far harder wearing than paint and UV resistant, ensuring many years of service.

OPEN POST



With its open post upright design, the Rackline Prospan static shelving system is extremely robust and extends beyond the sizes and capabilities of our Single Skin (Profile) and Double Skin (Proform) shelving systems.

Prospan is our take on longspan, but cleverly designed to retain a more elegant style that can sometimes be lost with the traditional, more industrial aesthetic associated with longspan shelving.

Prospan shelving can be specified in numerous lengths, between 1200mm and 1600mm wide and heights of up to 4500mm.

This shelving boasts a capacity spread load per shelf of up to 125kg making it ideal for archives and areas where heavier items need to be stored.

MOBILE SHELVING

Rackline's mobile storage systems are the perfect solution to increasing your storage capacity while reducing your storage footprint.

No matter the term you use, mobile shelving, mobile aisle shelving, compactus, roller racking, or rolling stack we offer a range of mobile storage systems to suit any industry sector.

INCREASE YOUR STORAGE SPACE BY 70%

MONOTRAK

Monotrak is a high density mobile shelving system that operates on a single surface mounted guide track. This track is designed to be non-trip and the clever design eliminates the use of 'infill floors' and the access ramps used by other brands.

Our rails are easy to install and produce little residual damage to the floor, making them both easy to install and easy to relocated if necessary.

The slim carriage profile and durable design results in load capacities of up to 3000kg across lengths of up to 5 meters. Monotrak can be combined with any of our static shelving models.



POWERTRAK



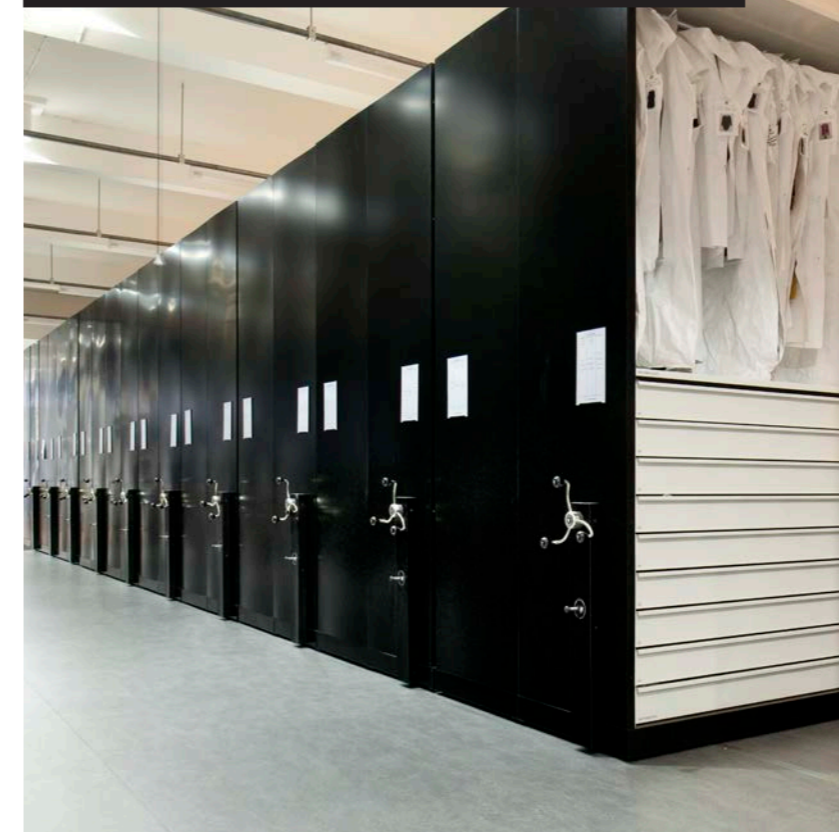
Powertrak electronic mobile shelving takes the effort out of depositing or retrieving your stored items.

Based on Rackline's time-tested Monotrak and Multitrak solutions, the units are fitted with simple to use motorised modules that take away the effort from the user. This means no handles and no manual winding.

Powertrak has all the sophisticated programmable logic controls you would expect from the latest high-tech system, but it combines this technology with extremely simple operator controls.

In normal operation an operator simply presses 'Green for Go' and all the controls and operations are handled automatically by the Powertrak module.

MULTITRAK



Multitrak mobile racking operates on the same principle as our Monotrak solution. However, Multitrak builds on it with the inclusion of multiple torque tubes and wheels. This allows for both longer bases and much higher load capacity.

Multitrak carriages can be up to 12 meters long and can accommodate load capacities up to 15 tonnes per carriage.

Even with high weight-loads the clever design of Multitrak ensures that carriages can be moved with ease.

Multitrak is perfect for museums, archives or industrial applications. The units are also suitable for buildings where the floor is uneven.

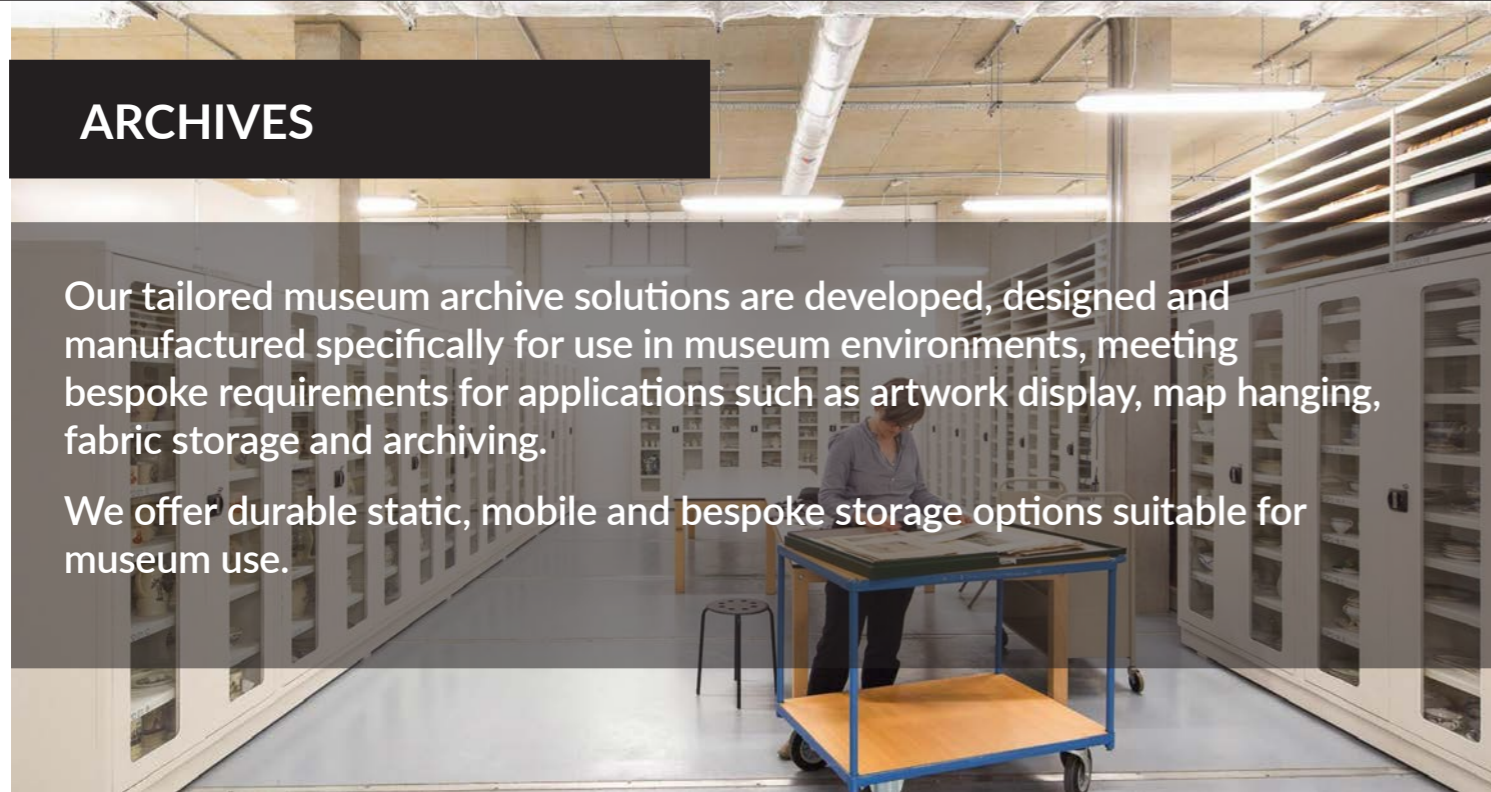
Multitrak tracks can be installed within 'new build' floor screeds, allowing for a flush, non-trip finish.

Simply combine Multitrak with a selection of Rackline's static shelving drawers or any other solution you require.

ARCHIVES

Our tailored museum archive solutions are developed, designed and manufactured specifically for use in museum environments, meeting bespoke requirements for applications such as artwork display, map hanging, fabric storage and archiving.

We offer durable static, mobile and bespoke storage options suitable for museum use.



PLAN CHESTS

Rackline's Plan Chest range is in use across a range of Museums, Archives and Drawing Offices. Drawers are designed with no internal fixings such as rivets and screws that could damage your valuable documents.

Drawers can be specified with or without locks and specified with Indexing tabs for the fast identification of contents.

Each contemporary steel chest is designed to the individual needs of the client, with sizes including A0 (1350x950x1205mm), A1 (1000x650x1205mm) and KK (Oversized 2150x1330x1205mm). Drawer heights can be configured from 65 to 200mm.



MUSEUM CABINETS



The Rackline Museum Cabinet range is equally at home in a museum archive or as part of a display.

We have also found them popular in any environment where there is a requirement for secure storage.

Our museum cabinets are available with plain steel doors, or with inset glass panels. These panels are both laminated and 6mm thick, they are designed to both maximise visibility and reduce UV exposure to a minimum.

The cabinets can be specified with drawers, shelves, trays or any custom touches you require, while a steel structure and powder coated finish ensures they are hard wearing and robust.

ROLL HOLDERS

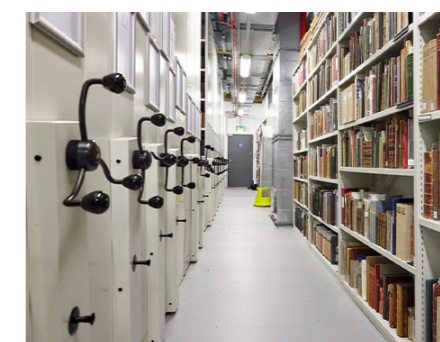


Rackline's Roll holders are designed as an adaption to our pull out artwork racking, and lateral systems.

This simple but ingenious adaption allows you to convert the racking to hold valuable textiles.

For users of our art racking systems, roll holders can be specified at the time of ordering or ordered separately. Also compatible with other similar systems, call us for more details and to confirm.

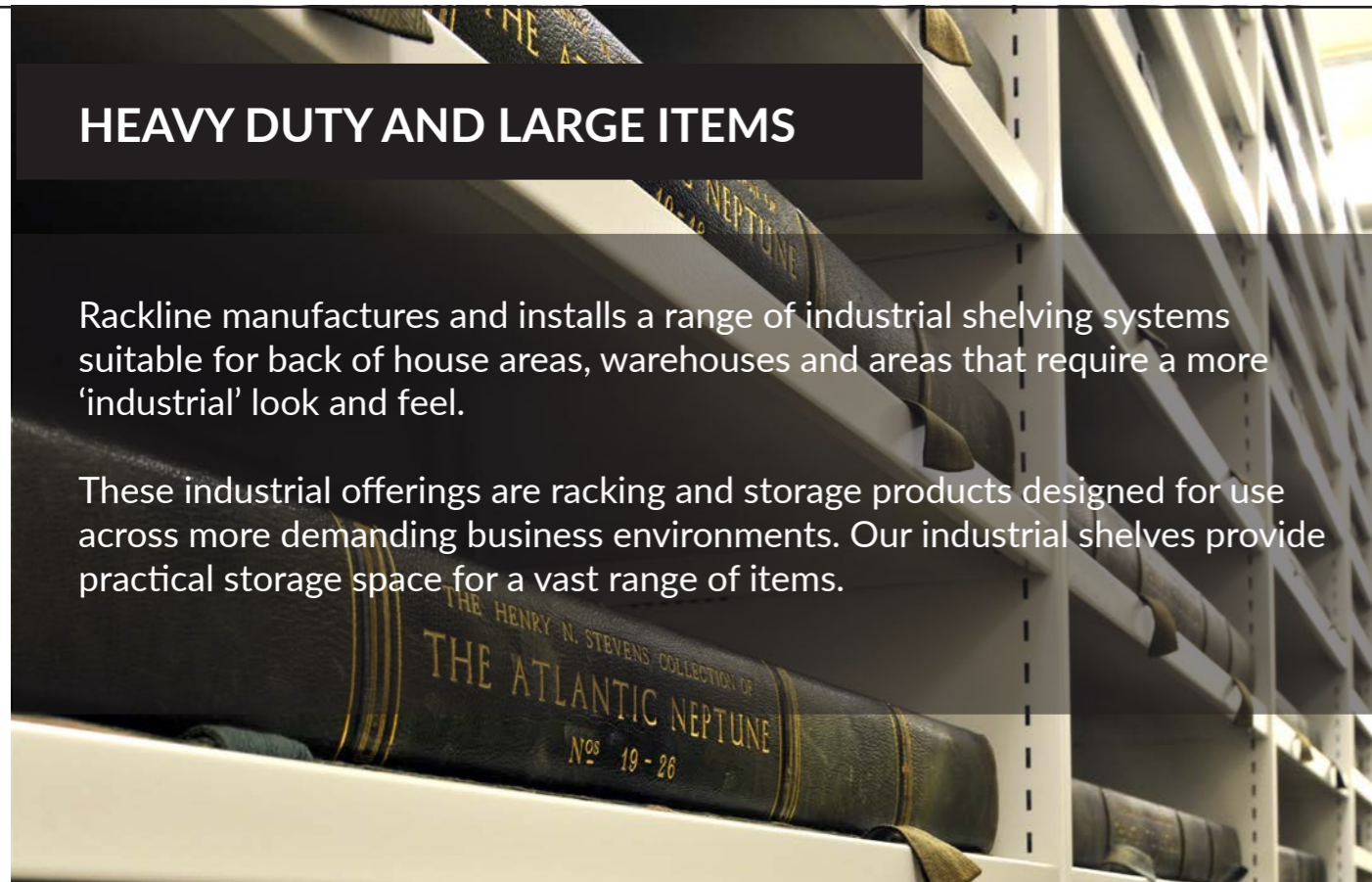
Get in touch to discuss your individual requirements...



HEAVY DUTY AND LARGE ITEMS

Rackline manufactures and installs a range of industrial shelving systems suitable for back of house areas, warehouses and areas that require a more 'industrial' look and feel.

These industrial offerings are racking and storage products designed for use across more demanding business environments. Our industrial shelves provide practical storage space for a vast range of items.



SPEEDRAX

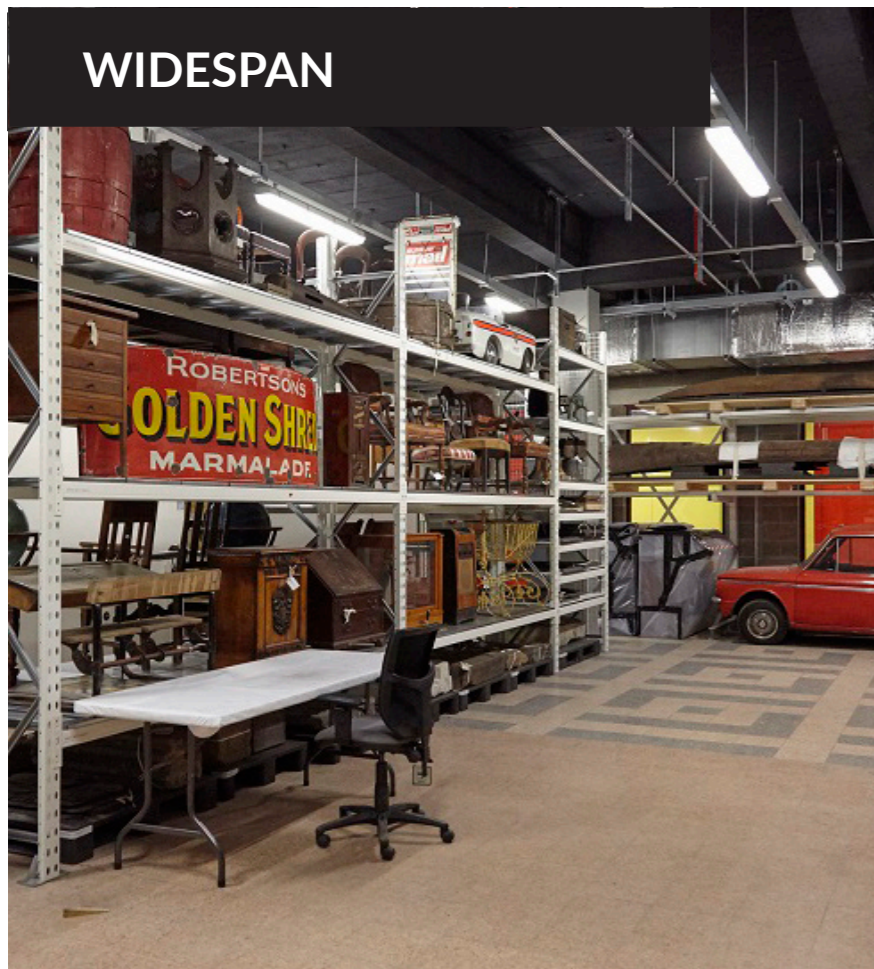
With a wide range of size options, Rackline's speedrax storage shelving is a cost effective option for all your storage needs.

Shelves can be easily adjusted to accommodate your changing inventory requirements, and offer unrestricted access from all sides.

Speedrax comprises of steel posts and beams supporting chipboard or steel decks. The shelves are ideal for bulky items and rated to carry up to 700kg per shelf. (Uniformly distributed load for a 1500mm wide load).



WIDESPAN



Widespan is Rackline's name for its longspan shelving system.

Widespan features either Steel or Chipboard Shelves on spans up to 2.7 metres, supported by either open or closed end frames.

Rackline's Widespan can be easily adapted to either two-tier or high bay installations with a wide range of beam profiles.

As Widespan has no back braces, access is possible from both faces of a single entry bay, this eliminates the need for a double entry configuration, and reduces the initial cost.

Widespan is both attractive and versatile with easily adjustable shelf levels and a smooth front face,

Examples of Widespan installations include: industrial settings, archives, museums, healthcare organisations and back of house retail.

LARGE ITEMS GALLERY



SECURE SOLUTIONS

Rackline's teams have been developing secure solutions for our clients since 1984. From small cupboards to full cage installs we can help you to keep your valuable items safe.

Our secure solutions are ideal for museum storage, providing robust protection for valuable artefacts and collections. Designed to safeguard your items, our systems ensure that your inventory remains safe and accessible.

CABINETS



ProSecure cabinets offer robust steel construction with lockable doors for secure storage in various environments.

ProSecure cabinets are available in standard sizes but can also be customised to meet your specific space requirements.

Additionally, choose from a range of internal options, including shelves, drawers and runners for trays. Cabinets can also be fitted with locks to your rating requirements.

CAGES



Rackline has provided secure caged areas to numerous organisations across a range of industries. For our Museum and Gallery clients we provide customised secure areas specifically designed to your space and items.

Our secure cages offer controlled access, safeguarding your most valuable items from theft and damage, while also allowing authorised personnel to retrieve and manage your inventory efficiently.

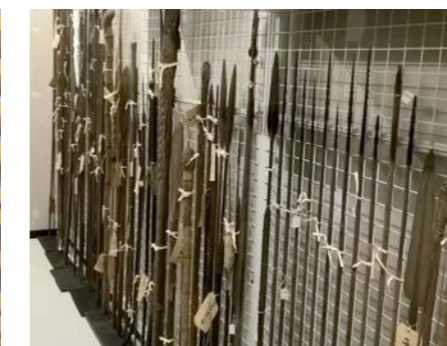
TAILORED SOLUTIONS

One of the biggest advantages of partnering with Rackline, is the ability of our teams to develop, not just solutions, but the right solutions for your individual needs.

Our teams can help you to maximise available space and choose options to precisely fit the items you need to store. We support you through the full process from initial space planning, design, manufacturing and installation.

Our skilled manufacturing team in Stoke-on-Trent can accurately manufacture those solutions you need, to maximise your space and keep your items secure.

SPECIALIST STORAGE AND DISPLAYS



If you are looking for something specific, whether it's a public facing display or a niche back of house storage facility for a unique collection, then we can help. Get in touch with us to discuss, Our team can help you to plan your space, but also design solutions that keep you valuable collection safe.

The logo for Rackline Storage Systems features the word "RACKLINE" in a bold, black, sans-serif font, with each letter contained within a white square. Below this, the words "STORAGE SYSTEMS" are written in a smaller, black, sans-serif font. A small icon of a wire mesh grid is positioned to the left of the word "STORAGE".

RACKLINE
STORAGE SYSTEMS

Rackline are the experts in the manufacture of specialised storage systems, supporting organisations worldwide in the safe storage and protection of their valuable items.

Get in touch today for a free no obligation site survey, layout drawings and quotation.

Rackline Limited,
Oaktree Lane, Talke,
Staffordshire ST7 1RX

W: www.rackline.com
E: now@rackline.co.uk
T: 01782 770 144