



Making Space Work For You

With over 40 years experience in the design, manufacture and install of a huge range of storage solutions for a diverse audience, Rackline are the perfect partner to maximise your space.



Rackline Headquarters, Talke Staffordshire

OVERVIEW



At Rackline we are storage consultants, designing, manufacturing and installing a cross section of storage solutions that transform and maximise our clients spaces while increasing efficiency of their operations.

Our high density storage products are in use across a huge range of sectors, including:

- Architecture and Design
- Archives
- Artwork Storage
- Education
- Emergency Services
- Government
- Healthcare
- Libraries
- Museums
- Offices
- Religious Buildings
- Retail Stockrooms
- Scientific and Research
- Warehouses and Distribution Centres

Rackline boasts an experienced design team, comprehensive manufacturing capability, and huge network of trusted partners have delivered value to clients across the world since 1984.

FIND OUT MORE AT:

WWW.RACKLINE.COM



RACKLINE

Our manufacturing facility operates from our main factory site in Staffordshire. The skilled teams boast hundreds of years of manufacturing skills between them, allowing for high volume production and highly flexible, high quality bespoke output.

The entire Rackline business adheres to both ISO9001 and ISO14001 standards, and has a focus on reducing its environmental impact. As a responsible manufacturer we take as many steps as possible to ensure that our manufacturing equipment and practices are as environmentally focused as possible.

ACCREDITATIONS AND MEMBERSHIPS



HOW TO FIND US



Tel: 01782 770 144

To find out more about any of these talk to your local sales representative.

OUR DESIGN PROCESS

At Rackline we consider ourselves more than a manufacturer and provider of cutting edge storage, we are a consultancy and partner. We have supported thousands of organisations from around the world in maximising their space, each solution tailored to their exact needs. Our design process has developed through many years of experience to uncover the needs of our clients and ensure they get the correct solution(s) first time.



1. Site Visit

The Rackline teams meet with the client to look at their plans, or survey the site. Our consultant will examine in detail the space available and understand the items being stored. This could include item dimensions, weights and numbers. It's also important to understand the environmental conditions in which items need to be stored.



2. Development of the Solution

After the visit, the Rackline projects team will examine the available solutions to fit the brief, and any requirements that fall outside of standard solutions.

At this point a first plan draft and details can be supplied, covering any standard and bespoke solutions required. This process could take weeks, or months, until a final plan is agreed.

3. Manufacture

Once a plan is finally agreed and signed off by the client, the Rackline manufacturing team can finalise designs, book time and move them into production.



4. Installation

Our expert installation crews then visit your site at a time that suits you, to construct and install your storage systems. They will ensure that this is as painless as possible, leaving your areas clear and conducting any training required to get you moving.

5. Aftercare and Service.

Post installation Rackline provides servicing, parts, accessories and even a removal and relocation service.

MUSEUM AND ARCHIVE

Our tailored museum storage solutions are developed, designed and manufactured specifically for use in museum environments, meeting bespoke requirements for applications such as artwork display, map hanging, costume storage and archiving.

We offer durable static, mobile and bespoke storage options suitable for museum use.



MUSEUM CABINETS



The Rackline Museum Cabinet range is equally at home in a museum archive or as part of a display.

We have also found them popular in any environment where there is a requirement for secure storage.

Our museum cabinets are available with plain steel doors, or with inset glass panels. These panels are both laminated and 6mm thick, they are designed to both maximise visibility and reduce UV exposure to a minimum.

The cabinets can be specified with drawers, shelves, trays or any custom touches you require, while a steel structure and powder coated finish ensures they are hard wearing and robust.

PLAN CHESTS

Rackline's Plan Chest range is in use across a range of Museums, Archives and Drawing Offices. Drawers are designed with no internal fixings such as rivets and screws that could damage your valuable documents.

Drawers can be specified with or without locks and specified with indexing tabs for the fast identification of contents.

Each contemporary steel chest is designed to the individual needs of the client, with sizes including A0 (1350x950x1205mm), A1 (1000x650x1205mm) and KK (Oversized 2150x1330x1205mm). Drawer heights can be configured from 65 to 200mm.



ROLL HOLDERS

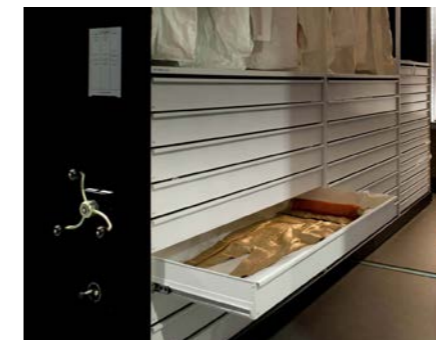


Rackline's Roll holders are designed as an adaption to our pull out artwork racking, and lateral systems.

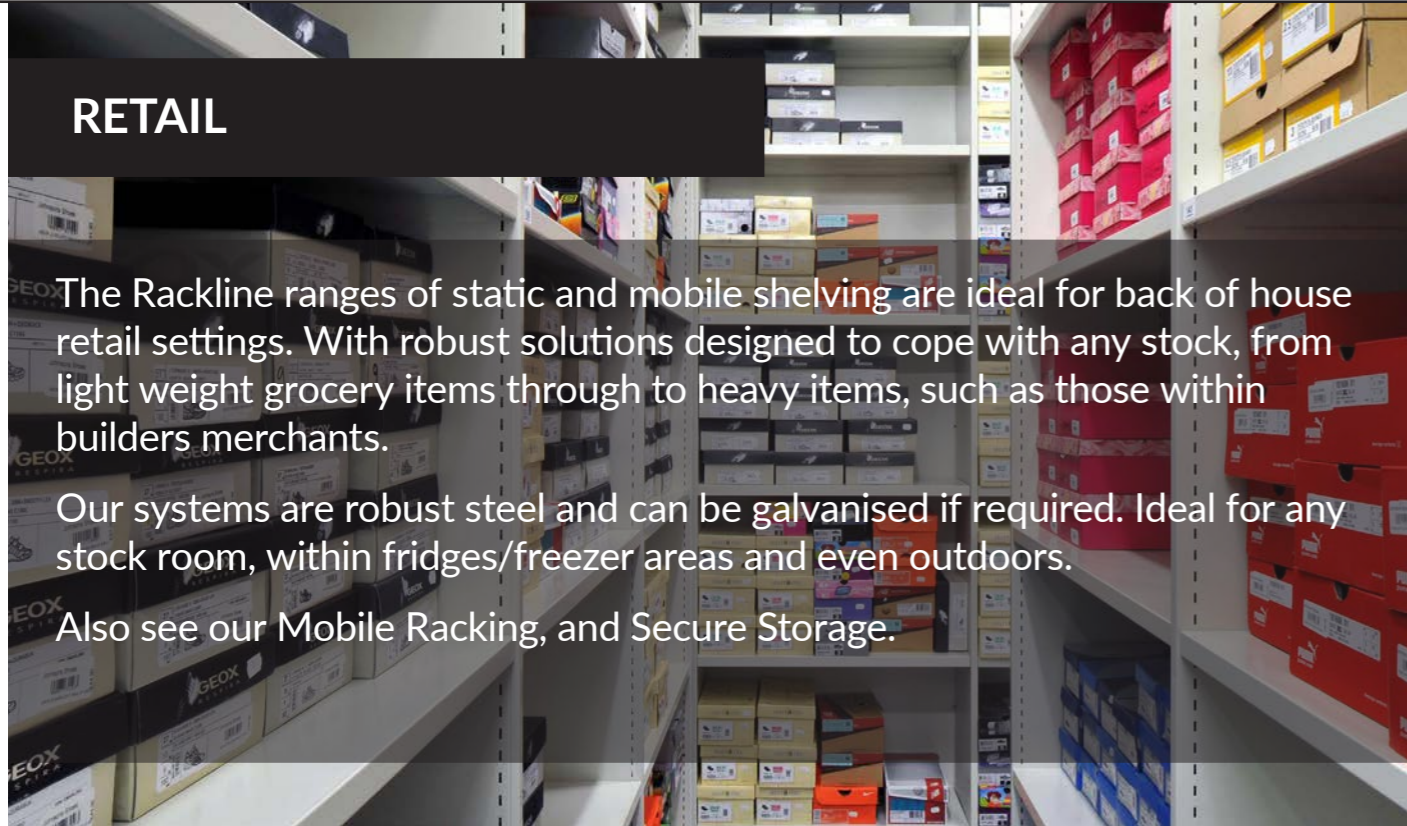
This simple but ingenious adaption allows you to convert the racking to hold valuable textiles.

For users of our art racking systems, roll holders can be specified at the time of ordering or ordered separately. Also compatible with other similar systems, call us for more details and to confirm.

Get in touch to discuss your individual requirements...



RETAIL



The Rackline ranges of static and mobile shelving are ideal for back of house retail settings. With robust solutions designed to cope with any stock, from light weight grocery items through to heavy items, such as those within builders merchants.

Our systems are robust steel and can be galvanised if required. Ideal for any stock room, within fridges/freezer areas and even outdoors.

Also see our Mobile Racking, and Secure Storage.

MOBILE SOLUTIONS

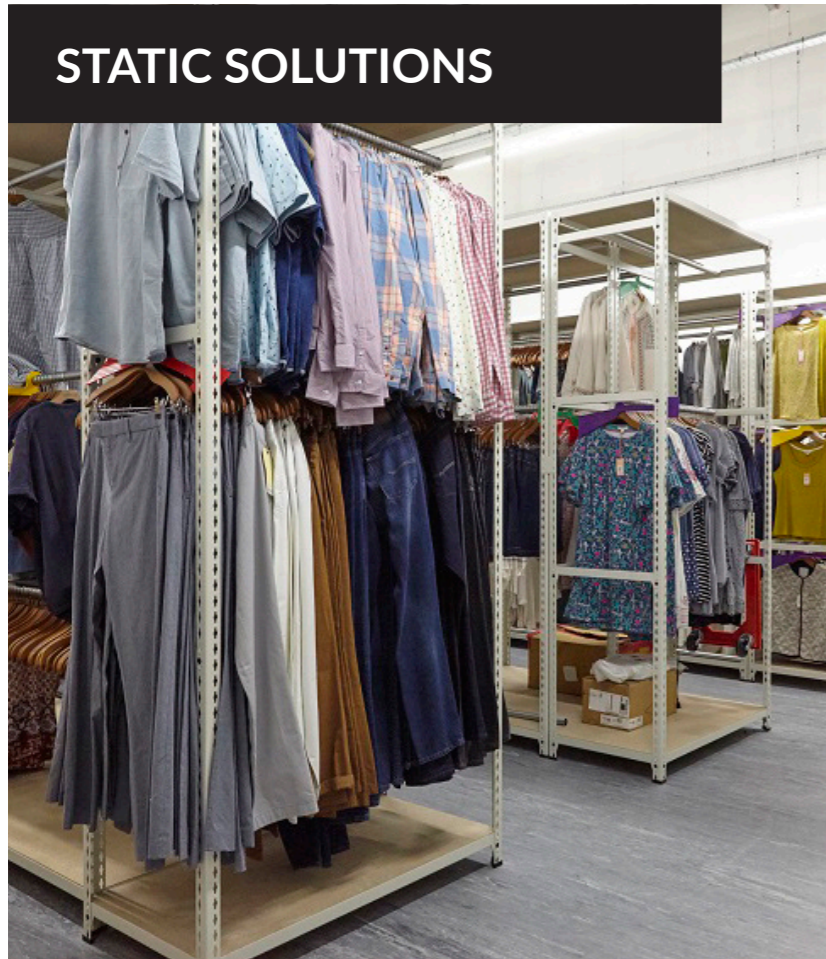
Rackline mobile racking and storage solutions come in a variety of size options and can be fitted to hold the items within your inventory.

In use in a variety of Retailers across the UK, we have adapted them with clothes rails, shelving and drawers to hold and protect precious stock.

Our mobile solutions provide up to 70% more storage space than traditional static shelving, so you can make the most of the storage you have without expansion.



STATIC SOLUTIONS



Speedrax is a simple to assemble, robust, all purpose shelving system.

Speedrax is designed to be used in a wide variety of workplace and back of house environments where it can be quickly assembled without tools.

Shelves can be easily adjusted to accommodate your changing requirements and offer unrestricted access from all sides. They are also extremely strong, ideal for bulky items.

Speedrax comprises of steel posts and beams supporting chipboard shelves. The system comes in a wide range of size options to fit your space.

With its huge range of accessories and configuration options, Speedrax is a low cost option for all your storage needs.

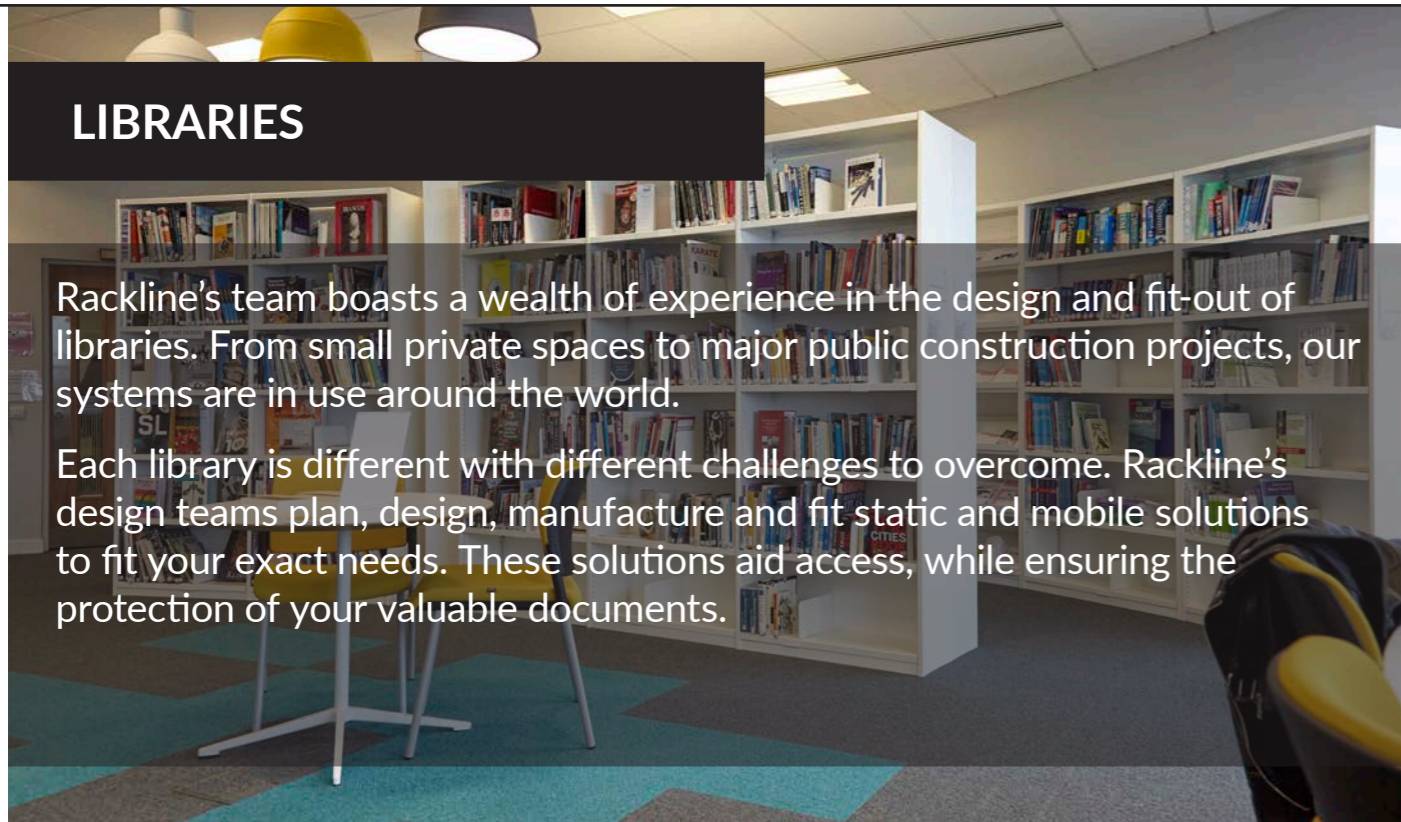
RETAIL GALLERY



LIBRARIES

Rackline's team boasts a wealth of experience in the design and fit-out of libraries. From small private spaces to major public construction projects, our systems are in use around the world.

Each library is different with different challenges to overcome. Rackline's design teams plan, design, manufacture and fit static and mobile solutions to fit your exact needs. These solutions aid access, while ensuring the protection of your valuable documents.



MOBILE SOLUTIONS

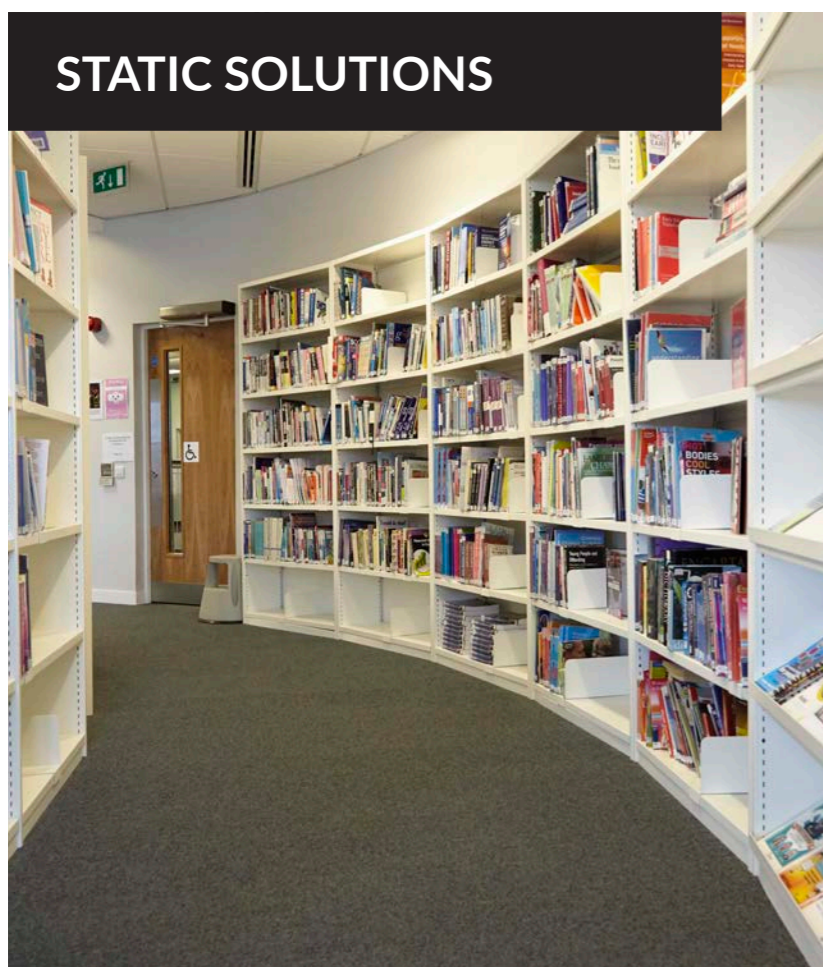
Rackline mobile racking solutions are designed to maximise storage, saving up to 70% of the space of traditional static solutions. Perfect for public spaces, or archive areas.

Fit your mobile storage solution with any of our static shelving systems, and choose from Multitrak, Monotrak or even our Powertrak electronic bases.

Each storage solution is designed to your exact needs, to fit your space and protect the items within your particular inventory.



STATIC SOLUTIONS



Rackline's static shelving solutions for libraries include our double skin (Proform and Pro-Libero) and single skin (Profile) systems.

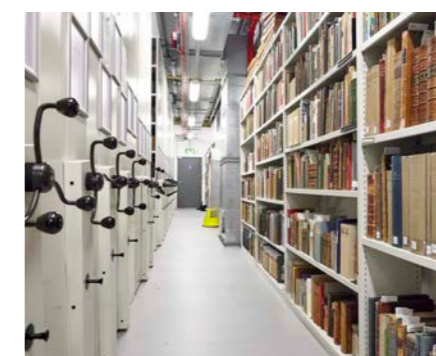
All our closed-wall Steel shelving solutions feature strong uprights and carefully manufactured components that remove sharp edges and any gaps that could trap items.

All our systems are designed to maximise access, while keeping your items safe and undamaged.

Each solution is designed to the exact needs of your space and your inventory, with shelving that can be flexed as your needs change.

With a huge range of accessories and configuration options, Rackline has solutions for any library environment.

GALLERY



HEALTHCARE STORAGE

The Rackline teams understand that healthcare environments need effective storage, and we offer the best possible storage solutions.

The storage requirements for healthcare settings are varied, with effective and accessible systems required for the safe and secure storage of everything from surgical supplies, mattress storage and stationery to x-ray film, fluids and patient documentation.



EDUCATION STORAGE

Rackline specialises in the supply of storage solutions for educational organisations. These come in many different shapes and sizes, including: bespoke mobile filing, archiving installations or static shelving applications.

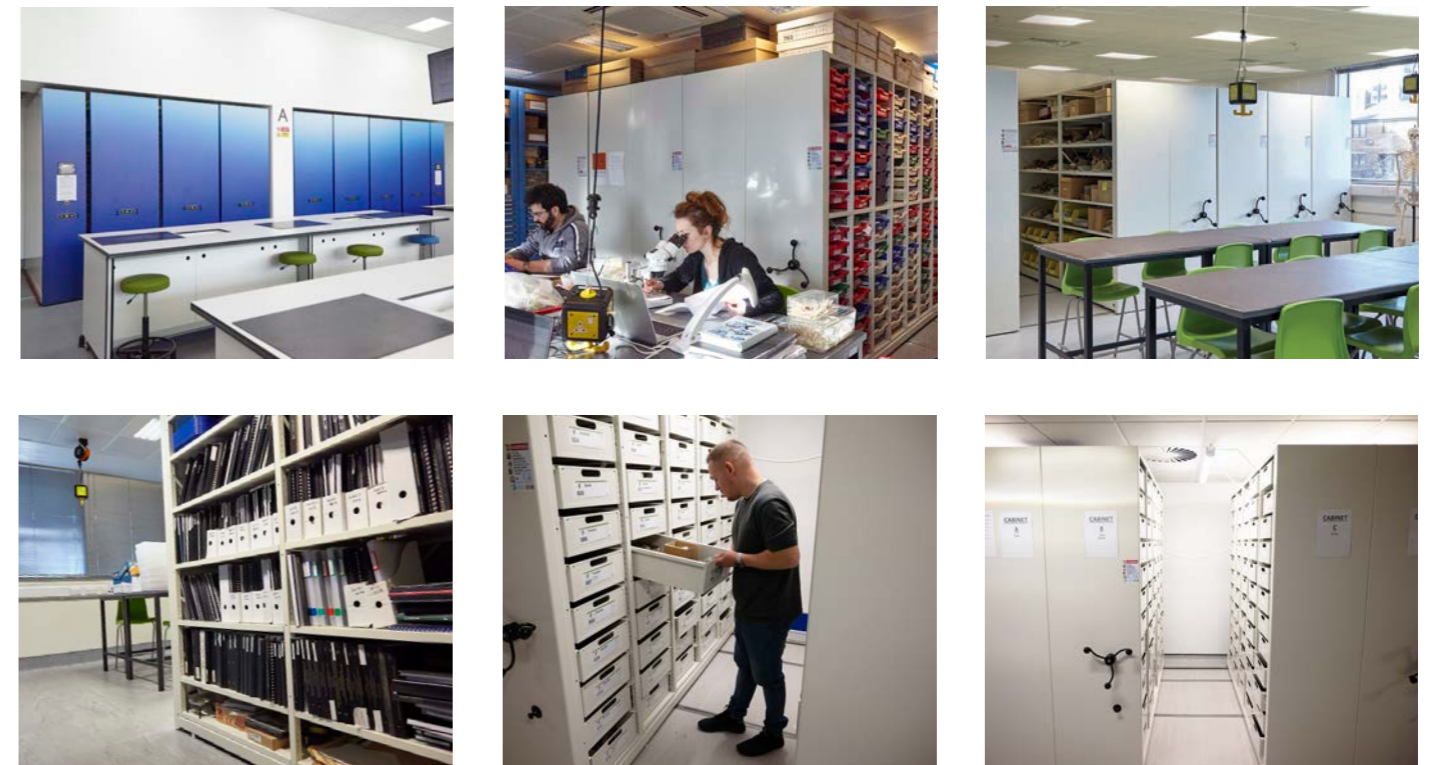
Our storage units for schools, colleges and universities are designed to fit your needs and our teams are experienced at squeezing the most out of often limited or unusually shaped spaces.



HEALTHCARE GALLERY



EDUCATION GALLERY

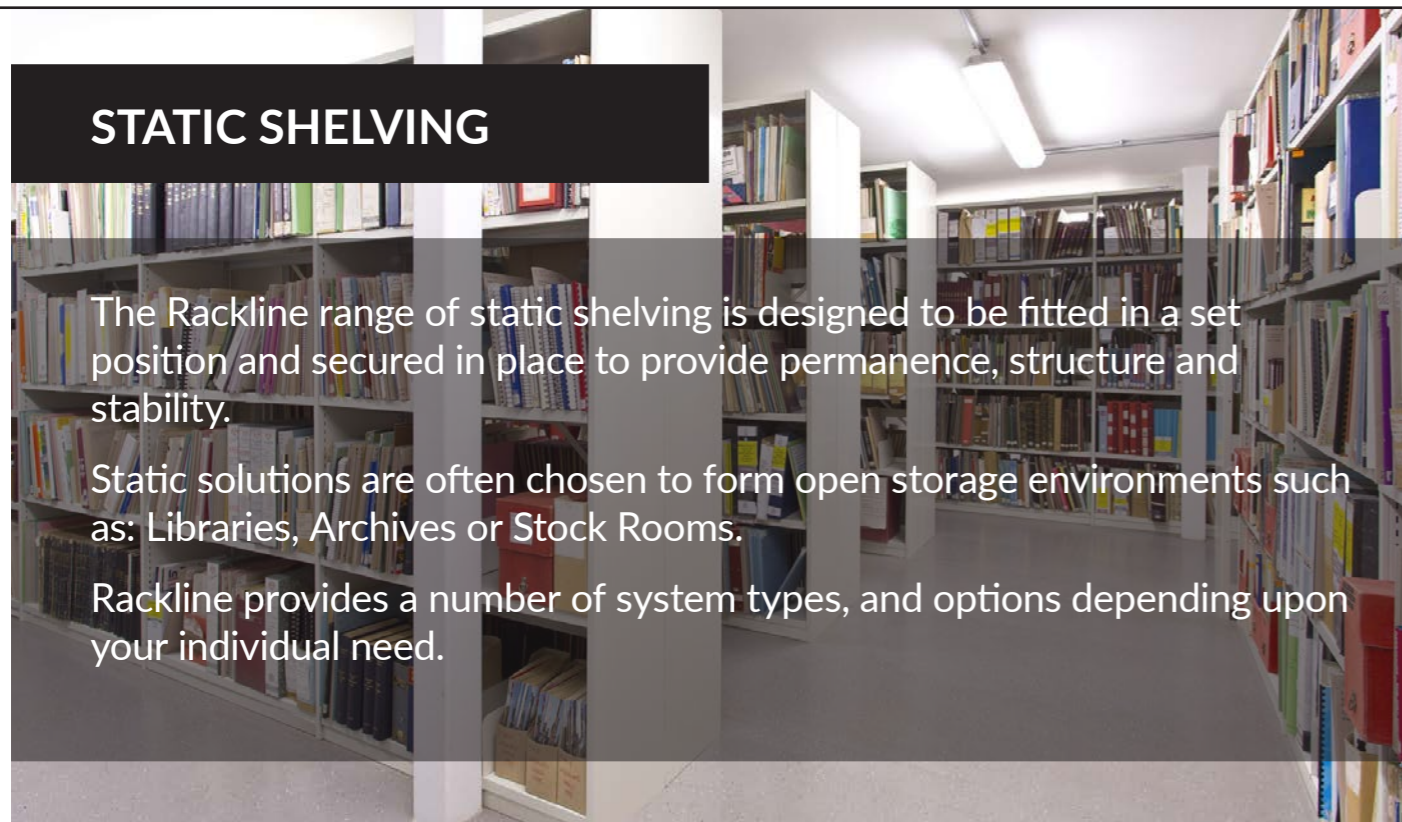


STATIC SHELVING

The Rackline range of static shelving is designed to be fitted in a set position and secured in place to provide permanence, structure and stability.

Static solutions are often chosen to form open storage environments such as: Libraries, Archives or Stock Rooms.

Rackline provides a number of system types, and options depending upon your individual need.



DOUBLE SKIN

Proform and Pro-Libero are our robust static shelving solutions featuring an incredibly strong 'box' section upright. This upright is manufactured as a double-skin panel with two sections spot-welded together.

These systems are cleverly designed to provide clear access, while protecting the shelf contents, with no protrusions, edges or raised seams.

Double Skin system are used in locations where delicate items such as precious manuscripts and rare books need protection.



SINGLE SKIN



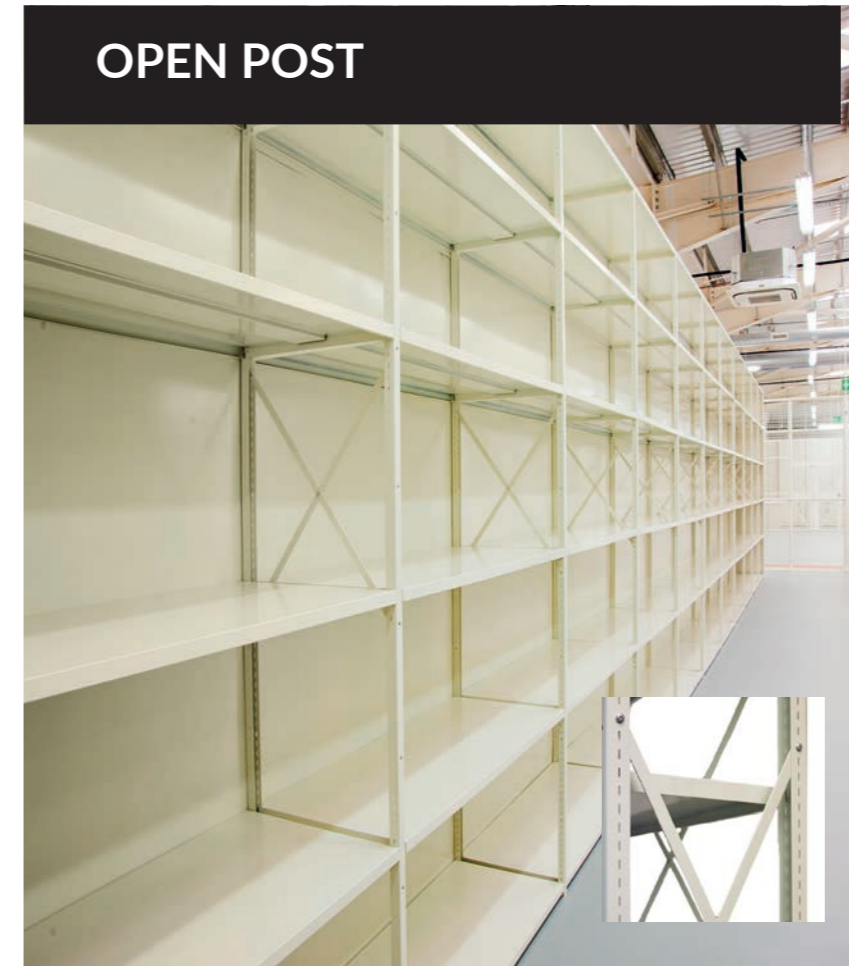
The Rackline Profile single-skin shelving system consists of a panel with a double-form rear section.

One of our range of closed-wall steel shelving systems, the intermediate uprights are designed to support the shelves in adjoining bays.

Clever design and careful manufacturing, removes sharp edges on the uprights and tight manufacturing tolerances remove the potential of stock migrating from bay to bay or becoming trapped behind upright posts.

Profile single skin shelving can be powder coated to your required colour to fit in with your environment. This finish is far harder wearing than paint and UV resistant, ensuring many years of service.

OPEN POST



With its open post upright design, the Rackline Prospan static shelving system is extremely robust and extends beyond the sizes and capabilities of our Single Skin (Profile) and Double Skin (Proform) shelving systems.

Prospan is our take on longspan, but cleverly designed to retain a more elegant style that can sometimes be lost with the traditional, more industrial aesthetic associated with longspan shelving.

Prospan shelving can be specified in numerous lengths, between 1200mm and 1600mm wide and heights of up to 4500mm.

This shelving boasts a capacity spread load per shelf of up to 125kg making it ideal for archives and areas where heavier items need to be stored.

MOBILE SHELVING

Rackline's mobile storage systems are the perfect solution to increasing your storage capacity while reducing your storage footprint.

No matter the term you use, mobile shelving, mobile aisle shelving, compactus, roller racking, or rolling stack we offer a range of mobile storage systems to suit any industry sector.

INCREASE YOUR STORAGE SPACE BY 70%



MONOTRAK

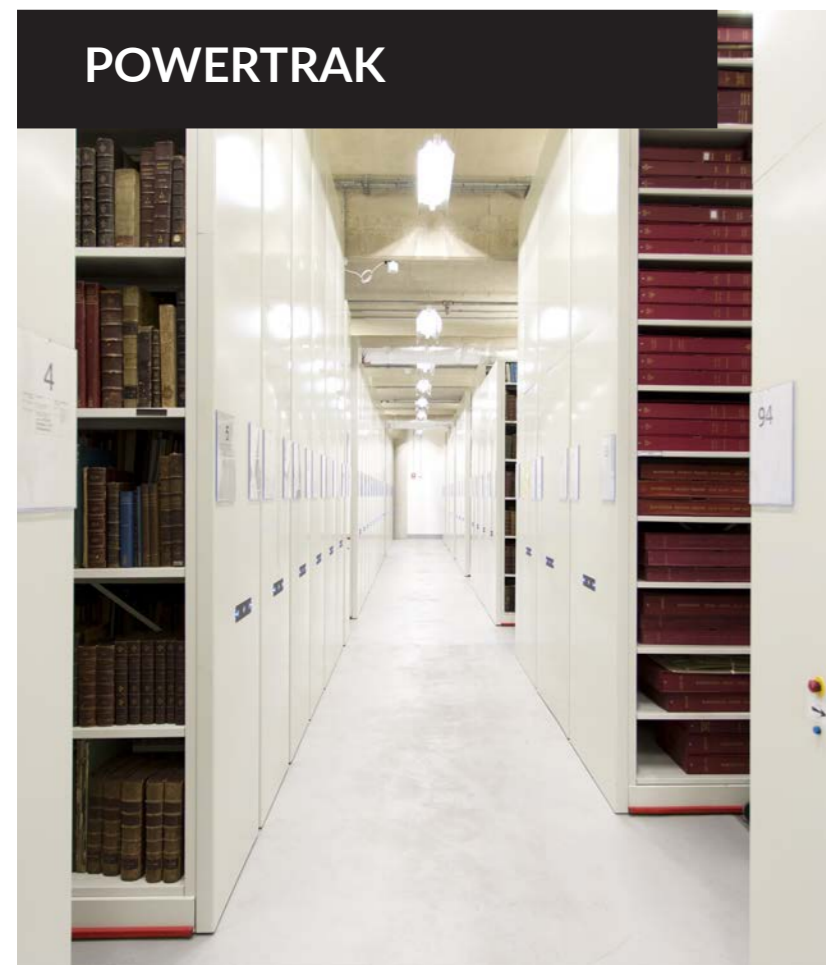
Monotrak is a high density mobile shelving system that operates on a single surface mounted guide track. This track is designed to be non-trip and the clever design eliminates the use of 'infill floors' and the access ramps used by other brands.

Our rails are easy to install, and produce little residual damage to the floor, making them both easy to install and easy to relocated if necessary.

The slim carriage profiles and durable design results in load capacities of up to 3000kg across lengths of up to 5 metres. Monotrak can be combined with any of our static shelving models.



POWERTRAK



Powertrak electronic mobile shelving takes the effort out of depositing or retrieving your stored items.

Based on Rackline's time-tested Monotrak and Multitrak solutions, the units are fitted with simple to use motorised modules that take away the effort from the user. This means no handles and no manual winding.

Powertrak has all the sophisticated programmable logic controls you would expect from the latest hi-tech system, but it combines this technology with extremely simple operator controls.

In normal operation an operator simply presses "Green for Go" and all the controls and operations are handled automatically by the Powertrak module.

MULTITRAK



Multitrak mobile racking operates on the same principle as our Monotrak solution. However Multitrak builds on it with the inclusion of multiple torque tubes and wheels. This allows for both longer bases and much higher load capacity.

Multitrak carriages can be up to 12 metres long and can accommodate load capacities up to 15 tonnes per carriage.

Even with high weight-loads the clever design of Multitrak ensures that carriages can be moved with ease.

Multitrak is perfect for museums, archives or industrial applications. The units are also suitable for buildings where the floor is uneven.

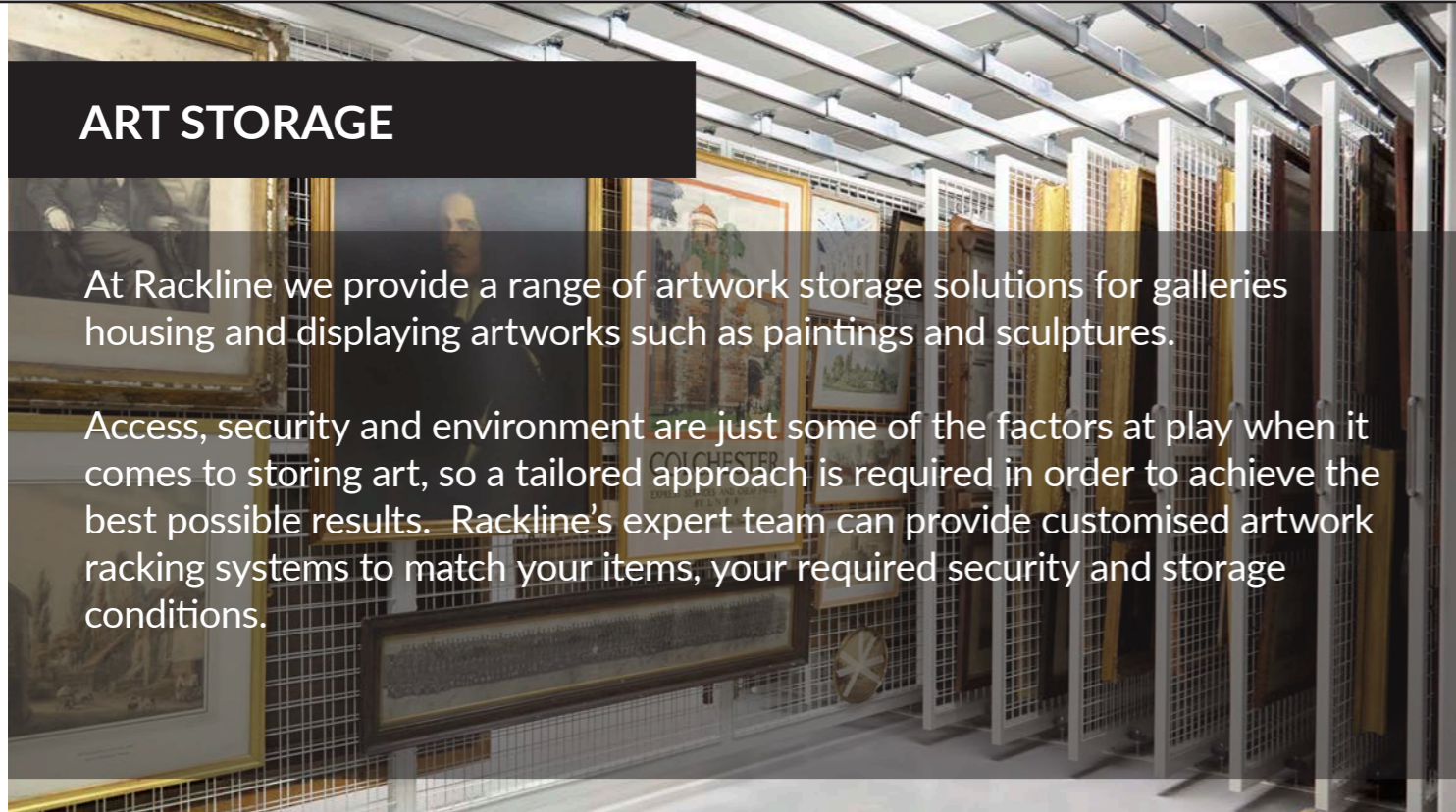
Multitrak tracks can be installed within 'new build' floor screeds, allowing for a flush, non-trip finish.

Simply combine Multitrak with a selection of Rackline's static shelving, drawers or any other solution you require.

ART STORAGE

At Rackline we provide a range of artwork storage solutions for galleries housing and displaying artworks such as paintings and sculptures.

Access, security and environment are just some of the factors at play when it comes to storing art, so a tailored approach is required in order to achieve the best possible results. Rackline's expert team can provide customised artwork racking systems to match your items, your required security and storage conditions.



LATERAL MOBILE RACKING

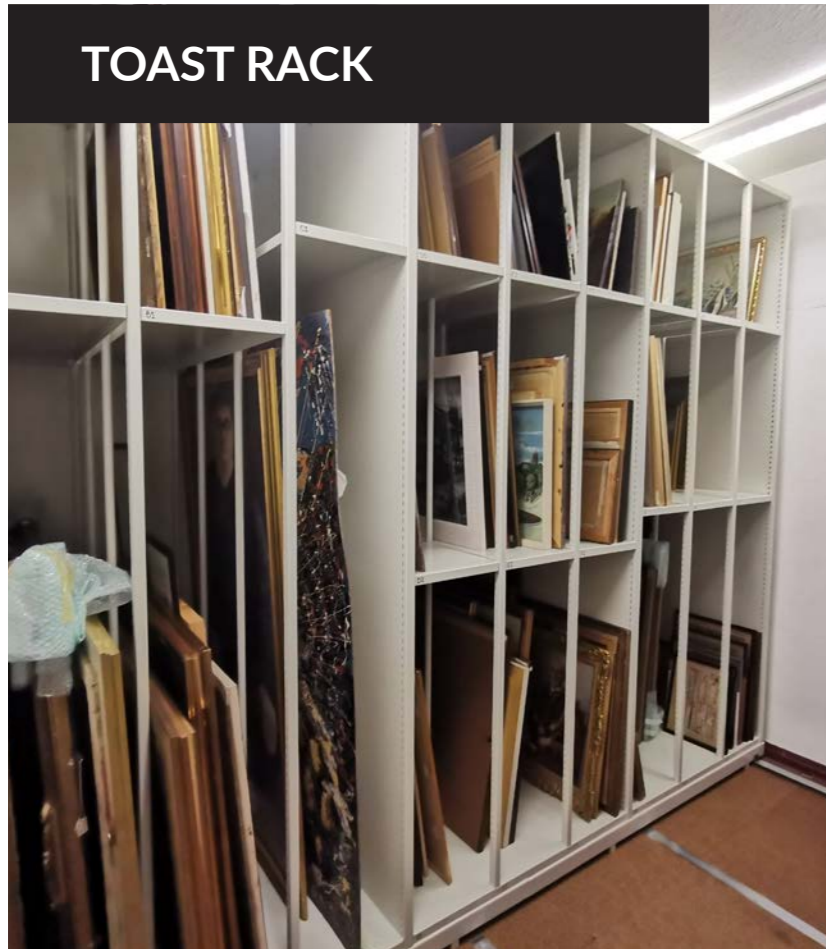
Rackline's Lateral Mobile Picture Racking (LMPR) is installed in numerous museums and archives around the world. The system incorporates double-sided mesh frames fitted to our mobile carriages.

LMPR works identically to, and utilises our mobile shelving bases, enabling you to maximise your floor space. Unlike our pull-out racking solution, only standard front gangways are required for access, and no frame or column structures are required.

The choice of mobile base required depends upon the weight loadings and size of the storage system.



TOAST RACK



The Rackline Toast Rack vertical storage solution is designed to safely store artworks in a high density, flexible manner.

Toast Rack units are highly configurable, featuring storage compartment heights (adjust the heights in 25mm increments) and widths to suit your individual needs and your desired capacity.

The internal pole dividers are far stronger than standard 'rod dividers' and are compatible with our shelving systems.

Toast Rack units can even be fixed to our mobile bases to maximise the capacity of your archive.

PULL OUT RACKING



Rackline's Pull-out Picture Racking comes in two varieties: top supported and bottom supported.

Both types are designed and manufactured to fit any storage space and can be used to store hanging items. We have seen everything from rare paintings to mounted animal heads hung from our systems..

The Pull-out Picture Racking is constructed from fully welded steel sections and can be free standing or ceiling supported.

The mesh frame is constructed from heavy gauge wire welded to both faces of a steel frame to give maximum square metre storage space to both sides.

As part of the Pull-out Picture Racking range, we also manufacture wire-mesh wall panels to provide additional storage capacity to wall faces or to turn 'dead spaces' into live space i.e. at the rear of conventional mobile racking systems.

INDUSTRIAL SHELVING

Rackline manufactures and installs a range of industrial shelving systems suitable for back of house areas, warehouses and areas that require a more 'industrial' look and feel.

These industrial offerings are racking and storage products designed for use across more demanding business environments. Our industrial shelves provide practical storage space for a vast range of items.



SPEEDRAX

With a wide range of size options, Rackline's Speedrax storage shelving is a cost effective option for all your storage needs.

Shelves can be easily adjusted to accommodate your changing inventory requirements, and offer unrestricted access from all sides.

Speedrax comprises of steel posts and beams supporting chipboard or steel decks. These shelves are ideal for bulky items and rated to carry up to 700kg per shelf. (Uniformly distributed load for a 1500mm wide load).



WIDESPAN



Widespan is Rackline's name for its longspan shelving system.

Widespan features either Steel or Chipboard Shelves on spans up to 2.7 metres, supported by either open or closed end frames.

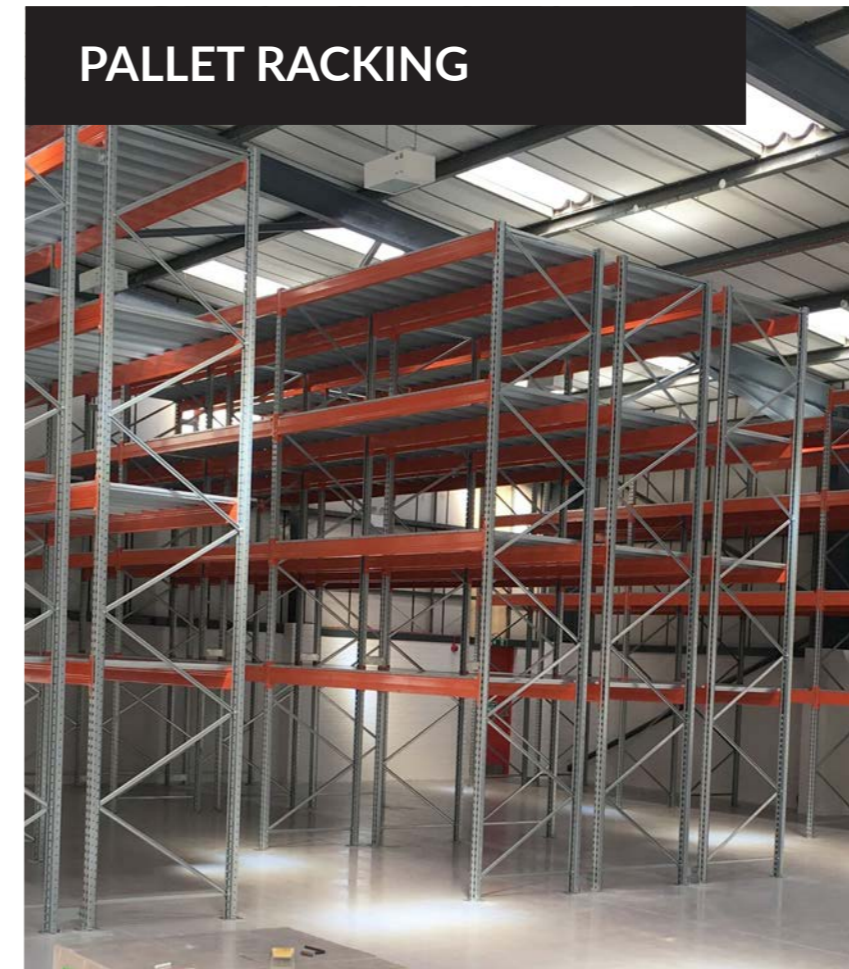
Rackline's Widespan can be easily adapted to either two-tier or high bay installations with a wide range of beam profiles.

As Widespan has no back braces, access is possible from both faces of a single entry bay, this eliminates the need for a double entry configuration, and reduces the initial cost.

Widespan is both attractive and versatile with easily adjustable shelf levels and a smooth front face,

Examples of Widespan installations include: industrial settings, archives, museums, healthcare organisations and back of house retail.

PALLET RACKING



Rackline's Warehouse Pallet Racking solutions help you and your business to improve efficiency and store more within your warehouse.

Our installation service and robust racking solutions are proven in warehouses across the UK.

Designed to be loaded by forklift trucks, our warehouse pallet racking systems are adjustable to fit your needs.

Our racking consists of robust uprights equipped with horizontal load beams that support your pallets. Beams can be fitted and adjusted within the frames to pitch heights that suit your individual pallet heights.

For poor quality pallets, transit pallets, or unusual items we can also supply a range of decking options to suit your needs.

SECURE STORAGE

Rackline's teams have been developing secure solutions for our clients since 1984. From small cupboards to full cage installs we can help you to keep your valuable items and documents safe.

Our secure solutions are perfect for use within offices, within retailers to secure your back of house stock, or even in military settings for separating and securing armaments.



ARMOURY STORAGE

Rackline armoury storage solutions are in use in numerous MOD (Ministry of Defence) and secure sites across the UK. Each project is unique and each is customised to the space and items being stored.

Manufactured from steel and powder coated in our factory, we take care of everything from space planning, to manufacture and install.

Locks and hardware can be specified to meet the requirements of your organisation and ensure your items are kept away from unauthorised access.



PROSECURE CABINETS



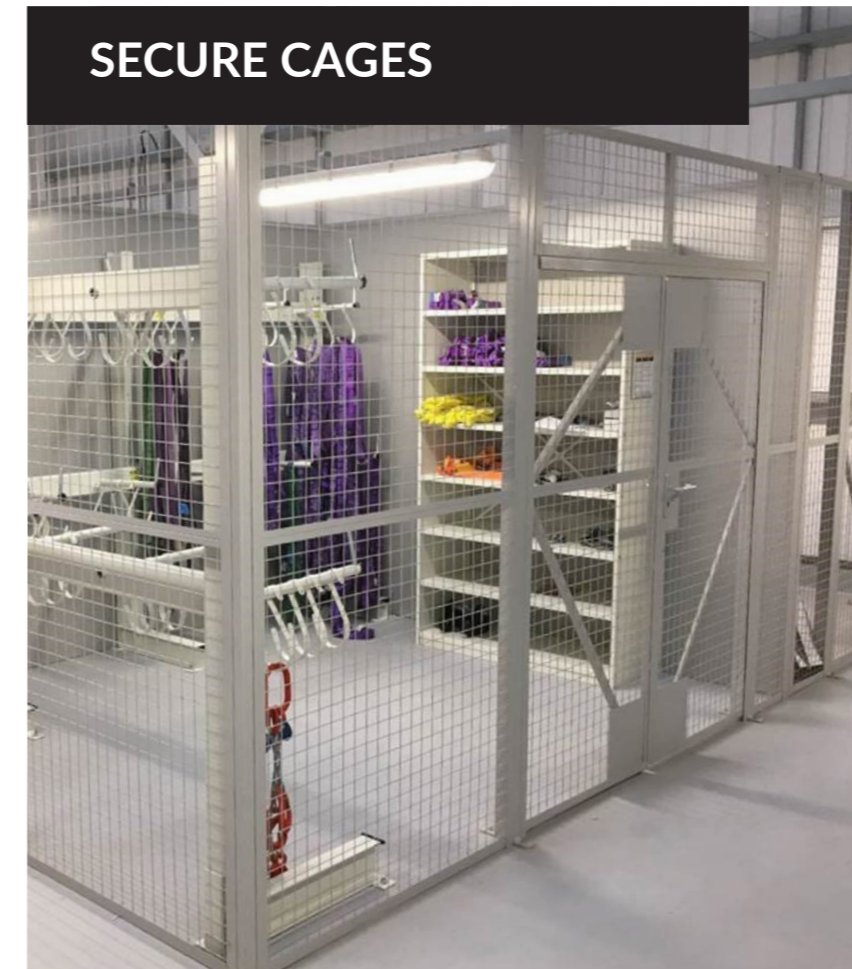
The Rackline range of ProSecure storage cabinets are designed and built in our Staffordshire factory. These cabinets are robust steel cabinets with strong lockable doors.

ProSecure cabinets are designed to store your secure documents, equipment, stock or personal items in any environment whether it is a hospital, school, office or industrial warehouse.

With security at their heart, we supply a variety of rated locks that can be specified to deliver the level of security you require.

ProSecure cabinets are manufactured in a few standard sizes: 6 level at 1836mm and 3 level at 996mm. However as these, and all the solutions within this catalogue are manufactured by us, we can adjust and configure cabinets to your individual requirements.

SECURE CAGES



As with our armoury solutions above, at Rackline we have the capability to build items to your needs.

Our teams have built secure areas for companies across numerous sectors. Each one developed to the individual needs of the space, items and the required security level of the site.

Our secure cages are in use within archives, to secure valuable items, within MOD sites to keep restricted items safe, and within retail to restrict access and reduce stock shrinkage.

TAILORED SOLUTIONS

One of the biggest advantages of partnering with Rackline, is the ability of our teams to develop, not just solutions, but the right solutions for your individual needs.

Our teams can help you to maximise available space and choose options to precisely fit the items you need to store. We support you through the full process from initial space planning, design, manufacturing and installation.

Our skilled manufacturing team in Stoke-on-Trent can accurately manufacture those solutions you need, to maximise your space and keep your items secure.

SPECIALIST STORAGE AND DISPLAYS

Rackline are the specialists in truly bespoke design and manufacture. No matter what your requirement we can develop solutions to fit your space and your items.

The Rackline design team transforms spaces, and converts your ideas into reality. Whether the requirement is for a single cabinet for your offices, shelving for your stock cupboard, secure display units for your gallery/museum, a full back of house archive or retail storeroom we can help you. With manufacturing experience stretching back to 1984 and an impressive portfolio of clients, you can rely on Rackline to provide the best solutions in the market.



ROTARY SHELVING

Rackline Rotary solutions are popular for both their high capacity and inherent security.

Larger units are the perfect replacements for traditional filing cabinets, while smaller units are ideal replacements for desk-side cupboards.

Suitable for any environment where capacity and security is paramount, the rotary units can be specified with locks making them ideal for storing your confidential documents and items.



SECURE PIROUETTE

The secure Pirouette models provide you with the exceptional high capacity with extended security features.

These extended security features include a rigid steel case with a flush fitted rear closure panel.

They feature hinge guards that provide a seal, preventing covert access. Additionally a detachable hand operated lock latching plate features a security combination lock.

Where required classification can be confirmed by the Government Security Division.



PIROUETTE



Pirouette rotary storage units are designed for both high-density and fast-retrieval.

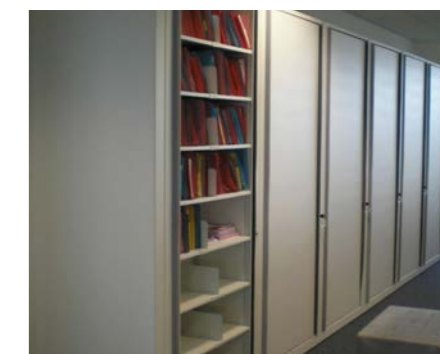
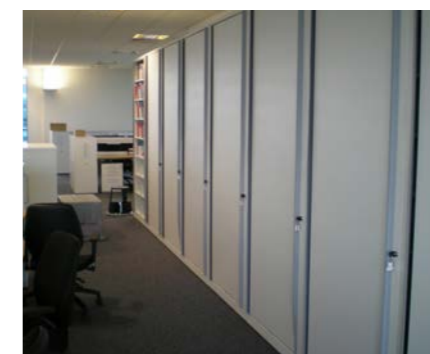
Available in multiple sizes depending upon your individual needs, they consist of a double-sided rotary storage system mounted into a heavy-duty rotary base.

A 90 degree turn of the central unit provides access to either shelf face without the operator moving from the spot.

Rotary units are far more efficient than conventional filing cabinets, providing greater convenience and capacity than traditional drawers:

Four units hold 48m of filing in less than 4m/s of space which is equivalent to 22 four-drawer filing cabinets in 12.4 square metres of floor space. Put simply, you gain 8.4 m/s of floor space.


PIROUETTE GALLERY



The logo for Rackline Storage Systems features the word 'RACKLINE' in a bold, black, sans-serif font, with each letter contained within a white square. Below this, the words 'STORAGE SYSTEMS' are written in a smaller, black, sans-serif font. A small icon of a hand holding a tool is positioned to the left of the word 'STORAGE'.

Rackline are the experts in the manufacture of specialised storage systems, supporting organisations worldwide in the safe storage and protection of their valuable items.

Get in touch today for a free no obligation site survey, layout drawings and quotation.

A long, brightly lit aisle in a storage facility. The aisle is flanked by rows of white metal shelving units, likely for storing documents or small items. The units have multiple shelves and are arranged in a way that creates a deep perspective. The floor is light-colored, and the ceiling has recessed lighting. The overall atmosphere is clean and organized.

Rackline Limited,
Oaktree Lane, Talke,
Staffordshire ST7 1RX

W: www.rackline.com
E: now@rackline.co.uk
T: 01782 770 144