

Artwork Storage Solutions



With over 40 years experience in the design, manufacture and install of a huge range of storage solutions for a diverse audience, Rackline are the perfect partner to maximise your space.

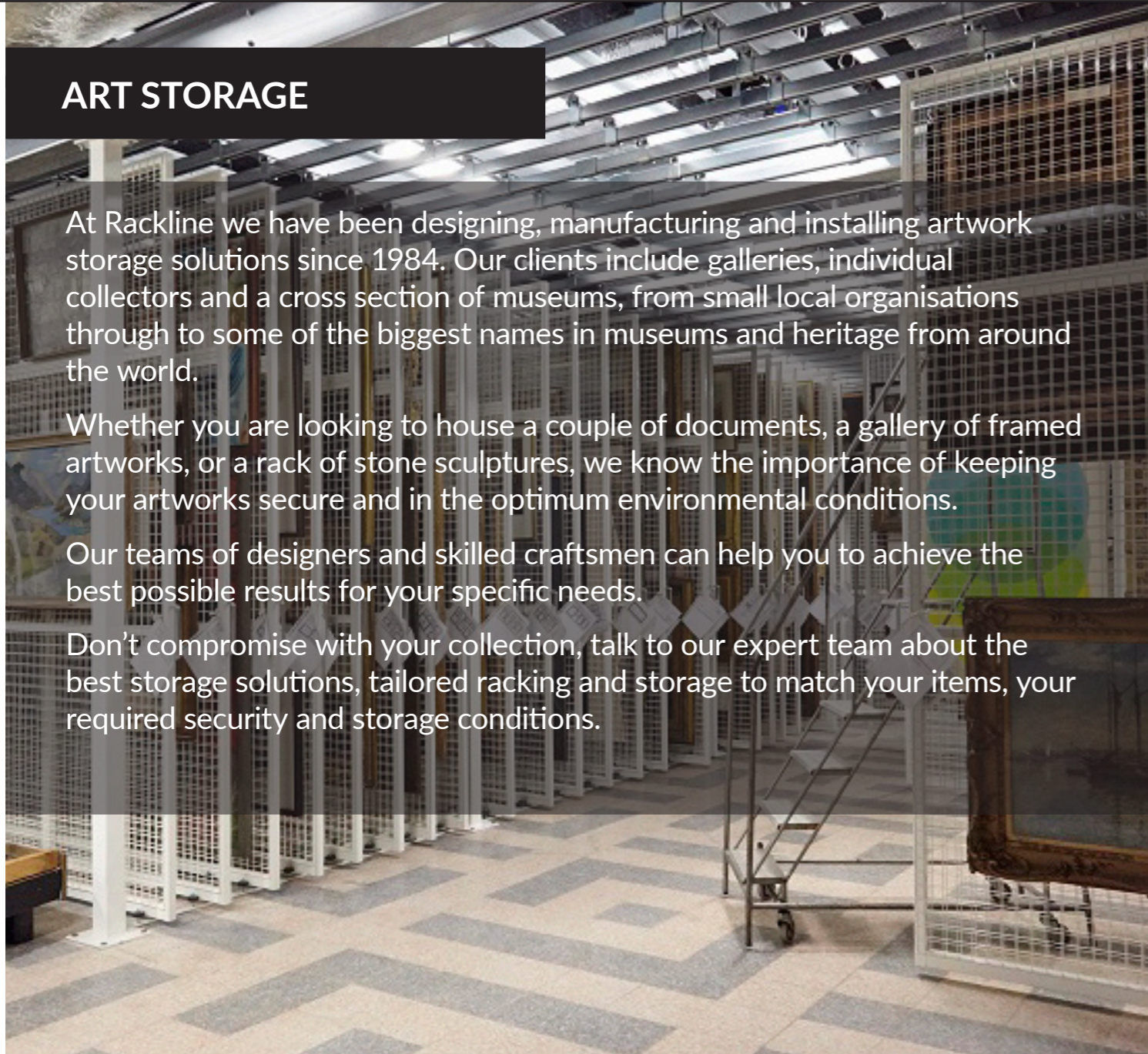
ART STORAGE

At Rackline we have been designing, manufacturing and installing artwork storage solutions since 1984. Our clients include galleries, individual collectors and a cross section of museums, from small local organisations through to some of the biggest names in museums and heritage from around the world.

Whether you are looking to house a couple of documents, a gallery of framed artworks, or a rack of stone sculptures, we know the importance of keeping your artworks secure and in the optimum environmental conditions.

Our teams of designers and skilled craftsmen can help you to achieve the best possible results for your specific needs.

Don't compromise with your collection, talk to our expert team about the best storage solutions, tailored racking and storage to match your items, your required security and storage conditions.



Dust stripping added to our mobile solutions ensures sealed space



Mobile solutions maximise the available space whilst keeping artworks away from light and dust.



Rackline's tailored solutions adapt your space and needs. In this case to store Solander archive boxes.

LATERAL MOBILE RACKING

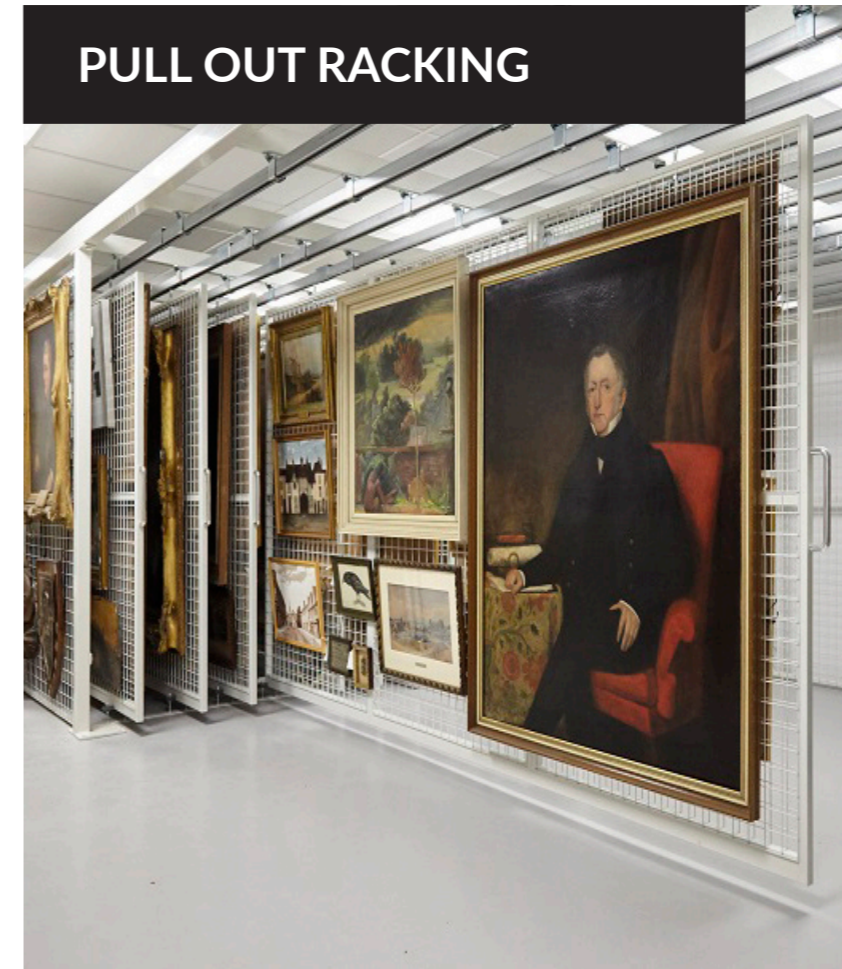
Rackline's Lateral Mobile Picture Racking (LMPR) is installed in numerous museums and archives around the world. The system incorporates double-sided mesh frames fitted to our mobile carriages.

LMPR works identically to, and utilises our mobile shelving bases, enabling you to maximise your floor space. Unlike our pull-out racking solution, only standard front gangways are required for access, and no frame or column structures are required.

The choice of mobile base required depends upon the weight loadings and size of the storage system.



PULL OUT RACKING



Rackline's Pull-out Picture Racking comes in two varieties: top supported and bottom supported.

Both types are designed and manufactured to fit any storage space and can be used to store hanging items. We have seen everything from rare paintings to mounted animal heads hung from our systems.

The Pull-out Picture Racking is constructed from fully welded steel sections and can be free standing or ceiling supported.

The mesh frame is constructed from heavy gauge wire welded to both faces of a steel frame to give maximum square metre storage space to both sides.

As part of the Pull-out Picture Racking range, we also manufacture wire-mesh wall panels to provide additional storage capacity to wall faces or to turn 'dead spaces' into live space i.e. at the rear of conventional mobile racking systems.

TOAST RACK

The Rackline Toast Rack vertical storage solution is designed to safely store artworks in a high density, flexible manner.

Toast Rack units are highly configurable, featuring storage compartment heights (adjust the heights in 25mm increments) and widths to suit your individual needs and your desired capacity.

The internal pole dividers are far stronger than standard 'rod dividers' and are compatible with our shelving systems.

Toast Rack units can even be fixed to our mobile bases to maximise the capacity of your archive.

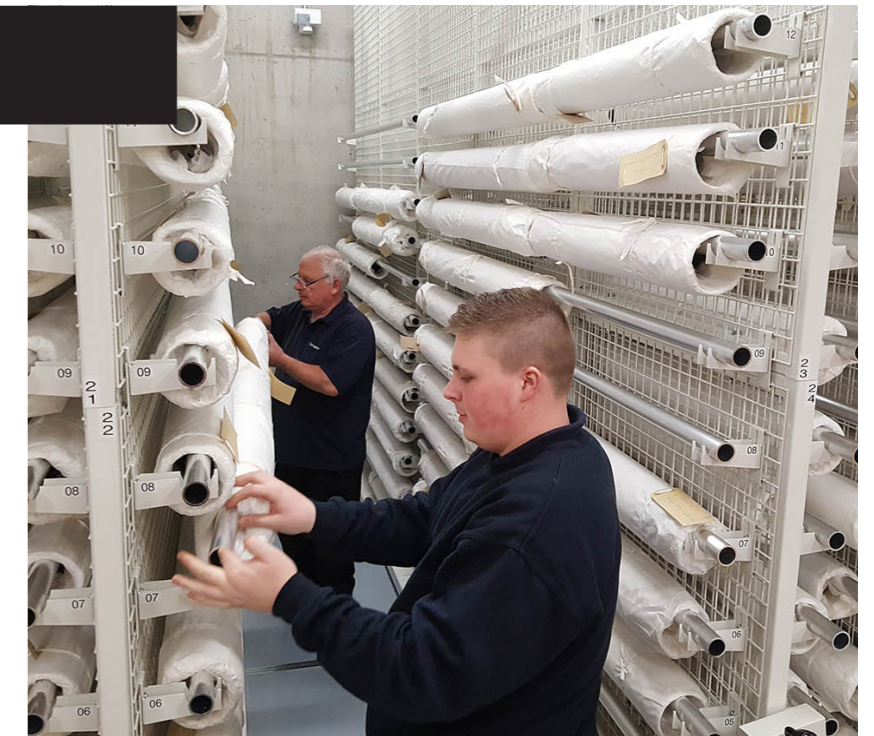


ROLL HOLDERS

Rackline's Roll holders are designed as an adaption to our pull out artwork racking, and lateral systems.

This simple but ingenious adaption allows you to convert the racking to hold valuable textiles.

For users of our art racking systems, roll holders can be specified at the time of ordering or ordered separately. Also compatible with other similar systems, call us for more details and to confirm.



PLAN CHESTS



Rackline's Plan Chest range is in use across a range of Museums, Archives and Drawing Offices. Drawers are designed with no internal fixings such as rivets and screws that could damage your valuable documents.

Drawers can be specified with or without locks and specified with indexing tabs for the fast identification of contents.

Each contemporary steel chest is designed to the individual needs of the client, with sizes including:

A0 (1350x950x1205mm), A1 (1000x650x1205mm) and KK (Oversized 2150x1330x1205mm). Drawer heights can be configured from 65 to 200mm.

TAILORED SOLUTIONS



One of the biggest advantages of partnering with Rackline, is the ability of our technical department to develop, not just solutions, but the right solutions for your individual needs.

Our highly experience teams can help you to maximise available space and choose options that precisely fit the items you need to store. We support you through the full process from initial space planning, through design, manufacturing and installation.

Our skilled manufacturing team operate out of our facilities in Stoke-on-Trent, and can accurately manufacture those solutions you need. Solutions that maximise your space and keep your items secure.

If you have a specific requirement then get in touch.

The logo for Rackline Storage Systems features the word "RACKLINE" in a bold, sans-serif font, with each letter contained within a white square. Below this, the words "STORAGE SYSTEMS" are written in a smaller, all-caps, sans-serif font. To the left of the word "STORAGE" is a small icon of a hand holding a hook, which is part of the company's branding.

RACKLINE
STORAGE SYSTEMS

Rackline are the experts in the manufacture of specialised storage systems, supporting organisations worldwide in the safe storage and protection of their valuable items.

Get in touch today for a free no obligation site survey, layout drawings and quotation.

Rackline Limited,
Oaktree Lane, Talke,
Staffordshire ST7 1RX

W: www.rackline.com
E: now@rackline.co.uk
T: 01782 770 144